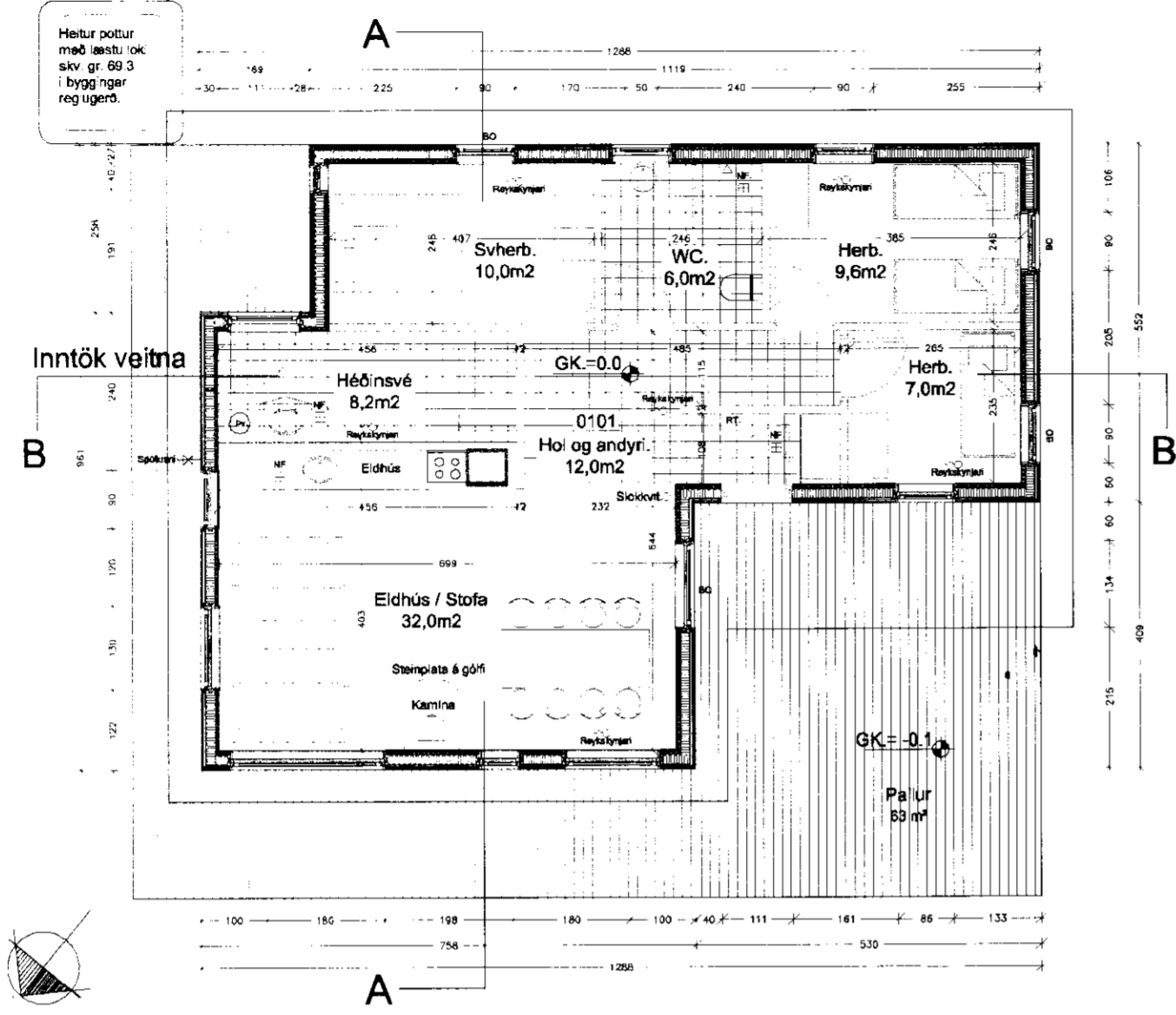
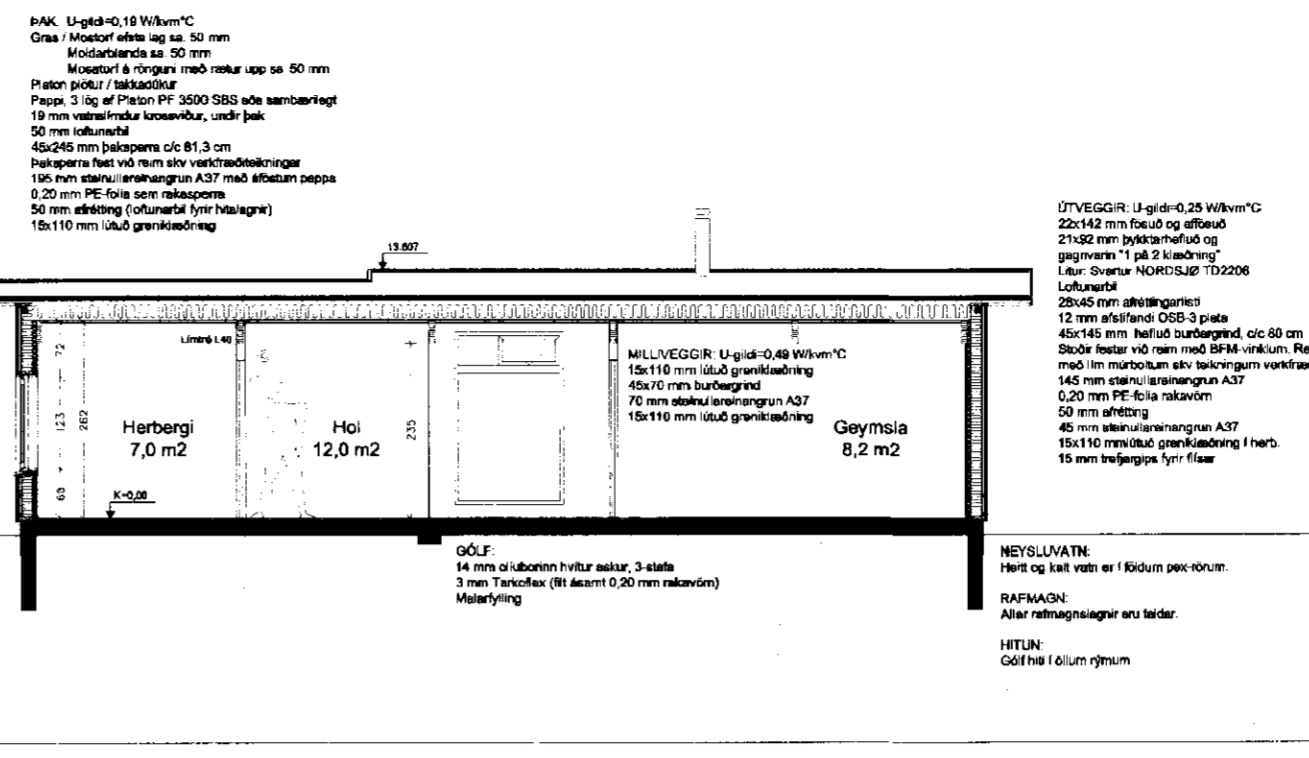


SAMPYKKT
 18 AUG. 2010
Ragn Kjartan
 byggingafrúni uppsv.áressýslu og Flóah.

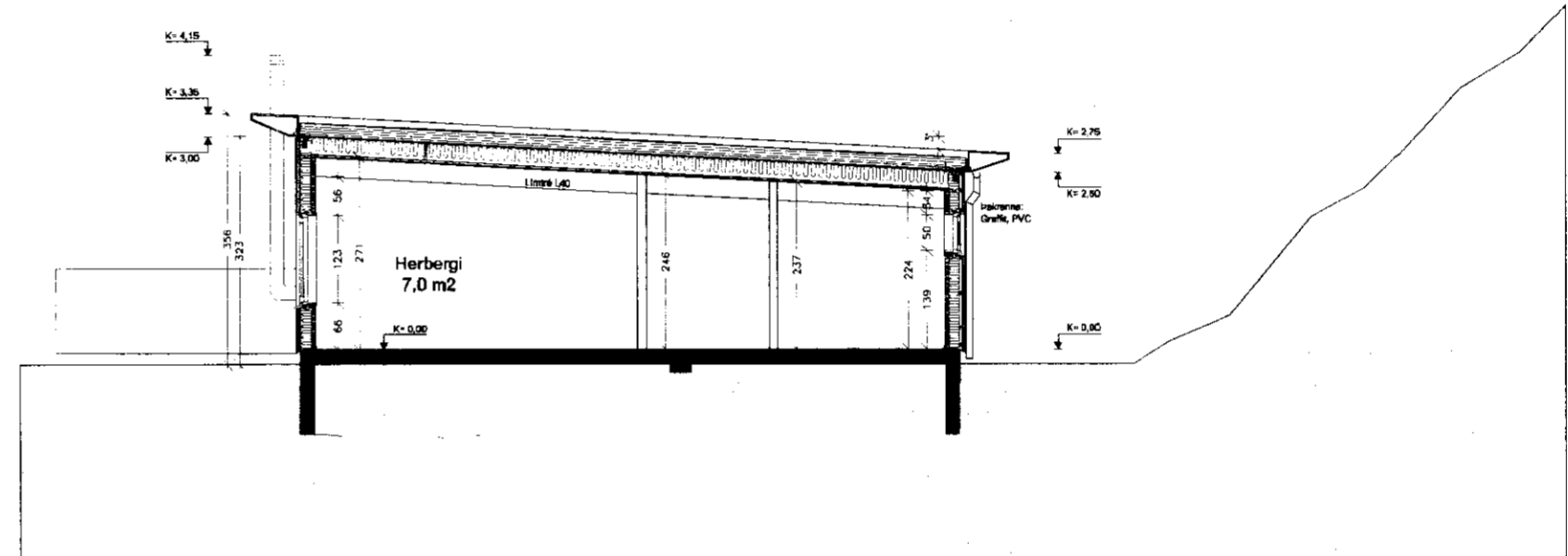


- STOFA**
 Gólf: 14 mm hvítur stúborn saur, 3 stöð
 Vegg: 15 mm ljósbólur þengsni
- ELDHÚS**
 Gólf: 14 mm hvítur stúborn saur, 3 stöð
 Vegg: 15 mm ljósbólur þengsni
- SVEFNBÆNDI**
 Gólf: 14 mm hvítur stúborn saur, 3 stöð
 Vegg: 15 mm ljósbólur þengsni
- BAÐ-HERBERÐI**
 Gólf: 14 mm hvítur stúborn saur, 3 stöð
 Vegg: 15 mm ljósbólur þengsni
- ANDYRI OG HOI**
 Gólf: 14 mm hvítur stúborn saur, 3 stöð
 Vegg: 15 mm ljósbólur þengsni
- GEYMSLA**
 Gólf: 14 mm hvítur stúborn saur, 3 stöð
 Vegg: 15 mm ljósbólur þengsni
- Flóah**
 Flóah: 15 mm ljósbólur þengsni

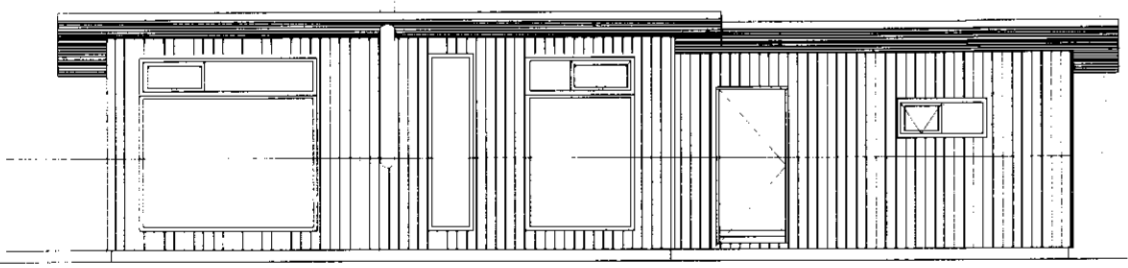
GRUNNMYND



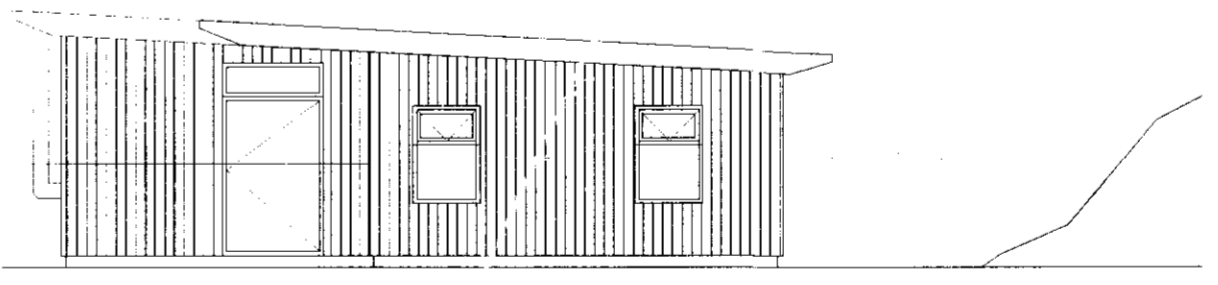
SNIG A-A



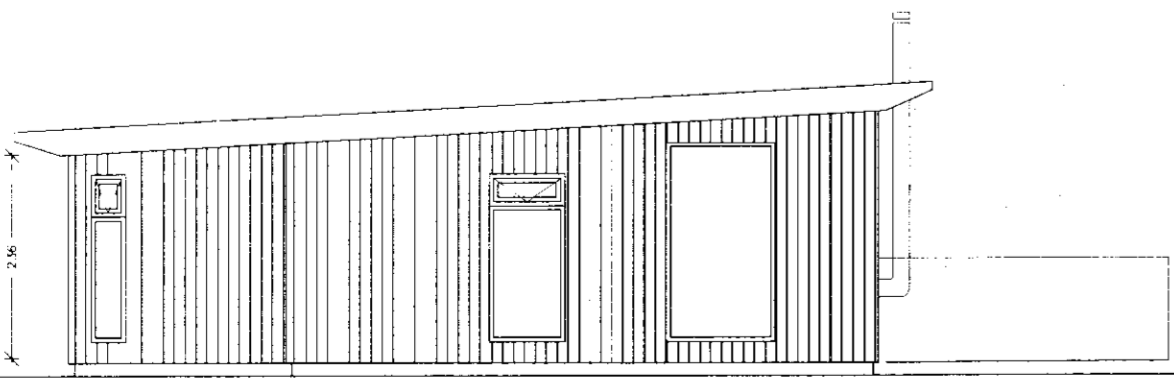
SNIG B-B



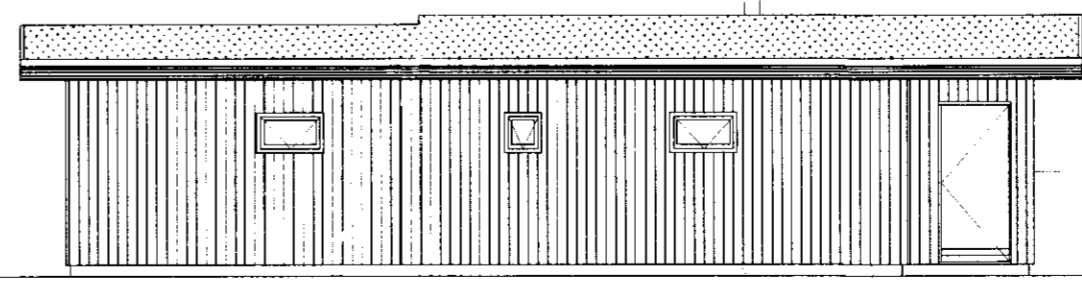
VESTURHLID



SÚÐURHLID



NORÐURHLID



AUSTURHLID

C:
 B:
 A:
 BREYTINGAR
 DAGS:

SUMARHÚS, HRUNAMANNAREPPUR
 HOLTABYGGÐ 108
 AÐALUPPRÁTTUR
 GRUNNMYND, SNIG
 OG ÚTLIT

VERK: 0510 HESK
 KVAFRÐI: 1:100
 DAGS: 05.05.2010
 TEIKN: P.M.M.
 SKRÁ

ÚTI INNI
ARKITEKTAR
 ÞINGHOLTSTRÆTI 27
 SÍMAR 5927660 & 5927660
 NETFANG
 VEFANG
 BALDUR Ó. SVAVARSSON
 JÓN ÞÓR ÞORVALDSSON
 021266.7579

101 REYKJAVÍK
 FAX 5927661
 uti@ui.is
 http://www.uti.is
 ARKITEKTAR FAI
 ARKITEKTAR FAI