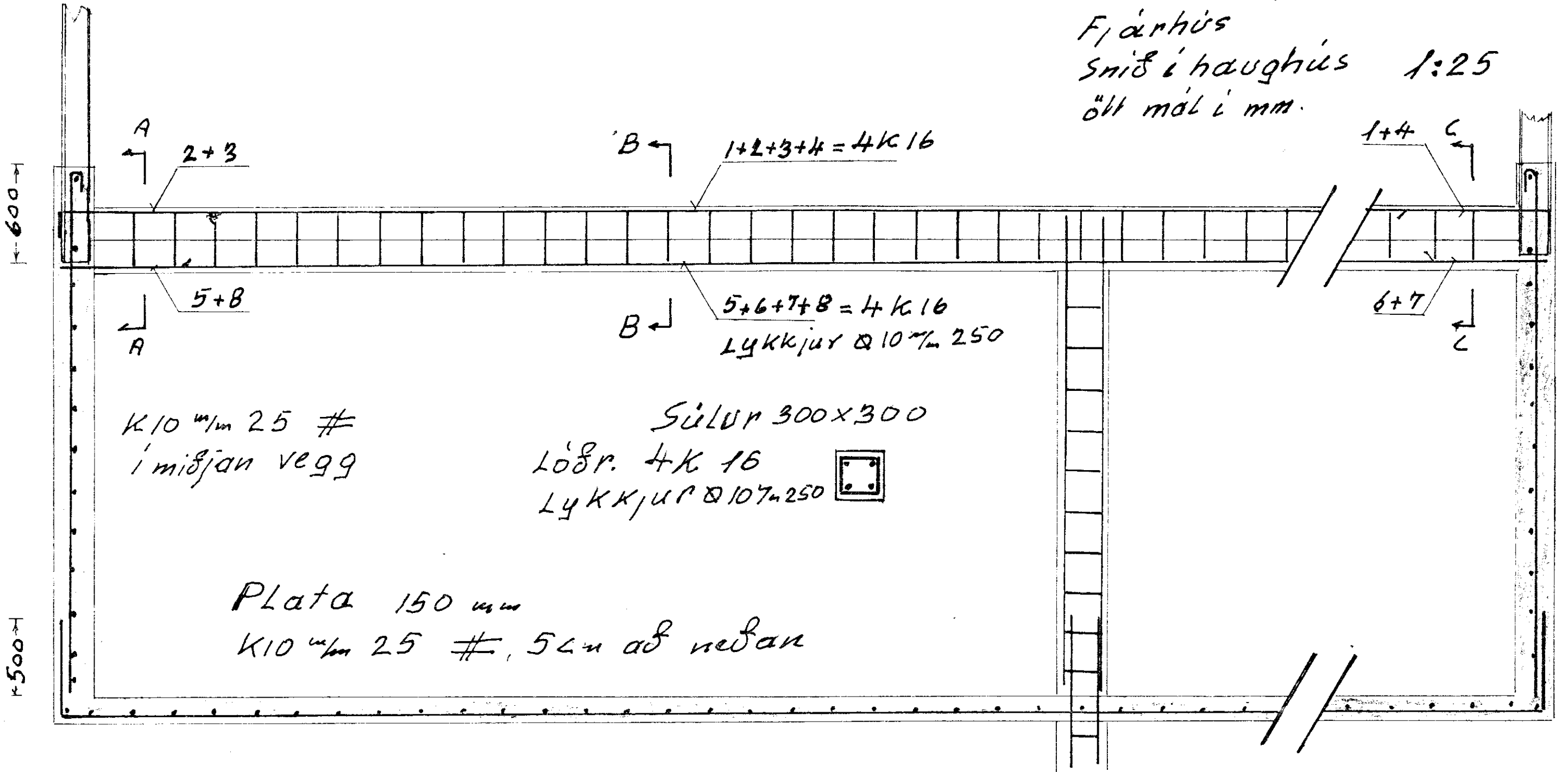


Bildsfelt
Fjárhús
Smíð í haughús 1:25
öll mál í mm.



A
2+3

B
1+2+3+4 = 4K16

1+4 C

A
5+8

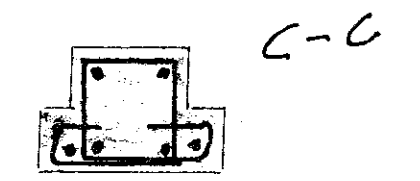
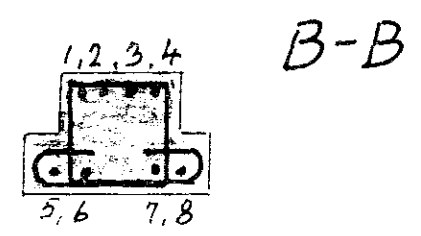
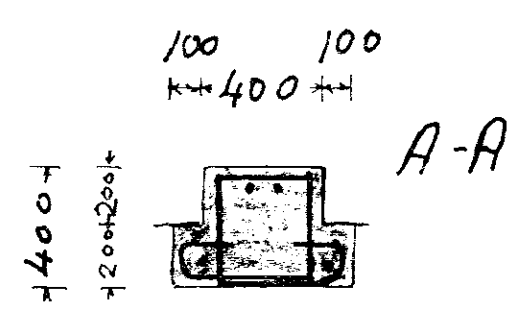
B
5+6+7+8 = 4K16
Lykkjur $\varnothing 10$ m 250

6+7 C

K10 1/2m 25 #
í miðjan vegg

Súlur 300x300
Löðr. 4K16
Lykkjur $\varnothing 10$ m 250

Plata 150 mm
K10 1/2m 25 #, 5cm að neðan



200	K16	11800 mm	Járn nr. 1, 2, 3, 4
	K16	12000 mm	Járn nr 5, 6, 7, 8.

27.02.1984
Markeinn