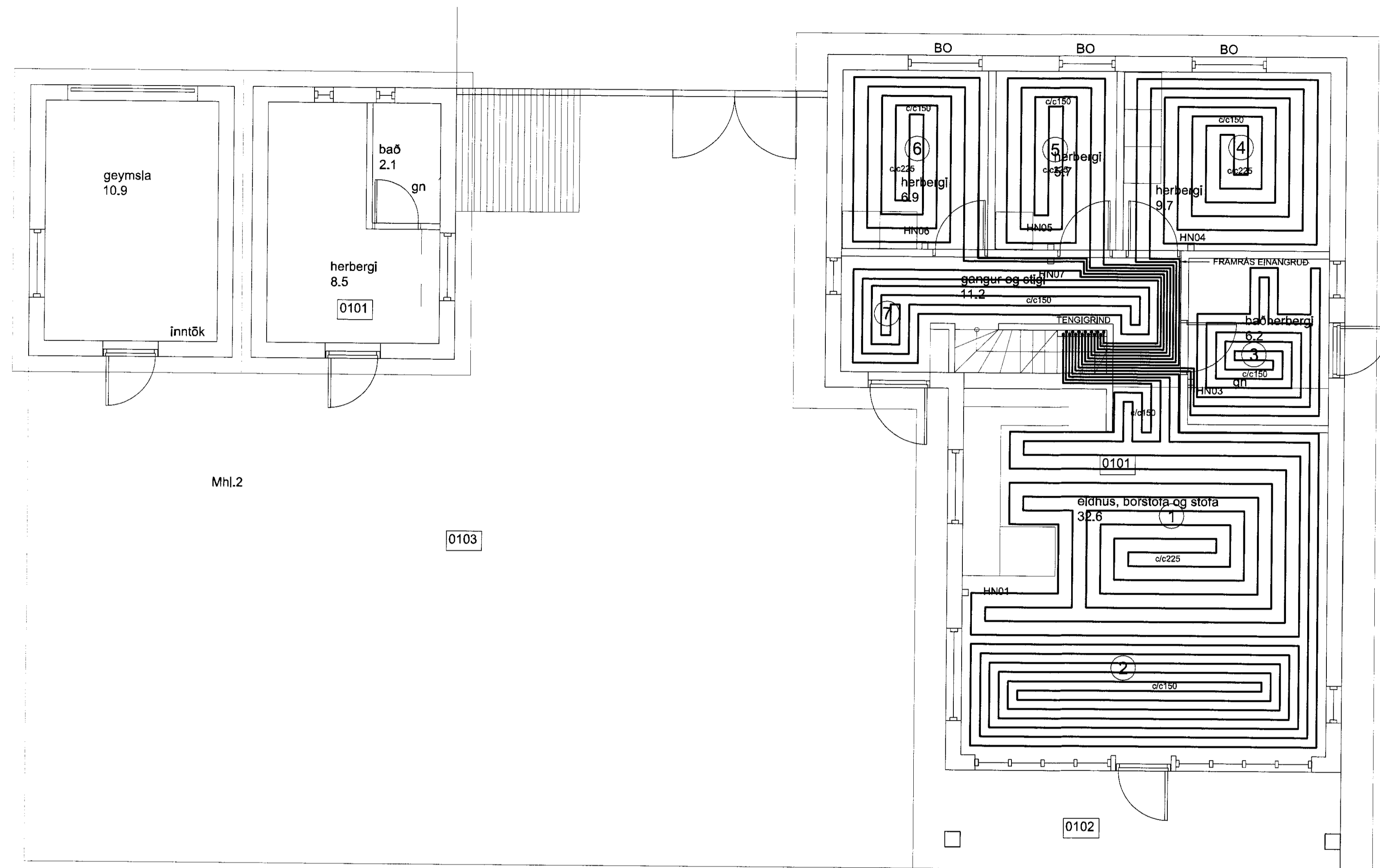
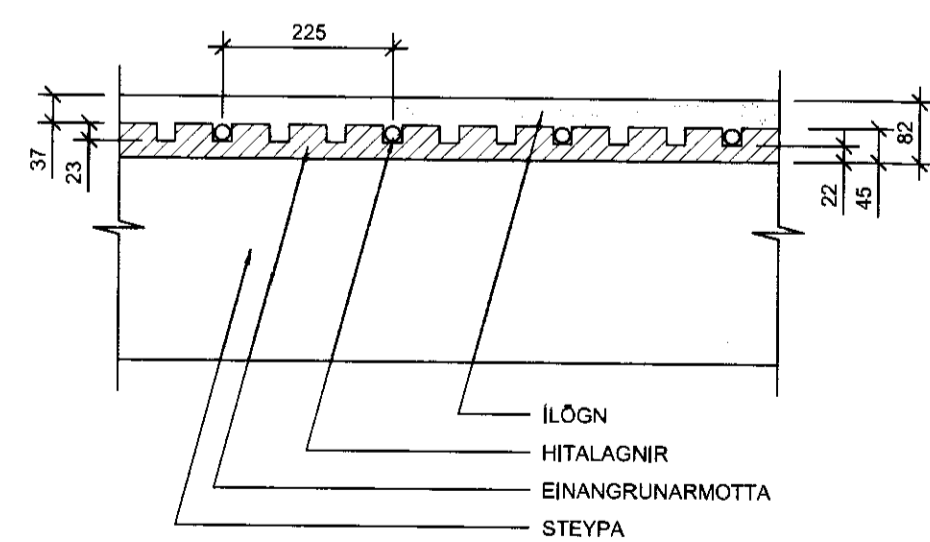


GRÖNN
Graf Pásson
Byggingartekni

ÁRITUN SAMREYNINGARHÖNDLUDAR



SM1 SÉRMÝND 1:10



GÓLFHITASKRÁ:

NR	AFKOST W	MILLIBIL cm	ÞVERMA L mm	LENGD m	RENNSLI l/s	MÓTOR LOKI	HITA NEMI
Dreifiskista 1							
1	1.209	22,5/15	16	87,0	0,029	ML 01	HN 01
2	1.209	22,5/15	16	82,0	0,029	ML 02	-
3	498	22,5/15	16	37,0	0,012	ML 03	HN 03
4	567	22,5/15	16	54,0	0,014	ML 04	HN 04
5	310	22,5/15	16	34,0	0,007	ML 05	HN 05
6	483	22,5/15	16	43,0	0,012	ML 05	HN 06
7	654	22,5/15	16	42,0	0,016	ML 06	HN 07

TILVÍSANIR:

ALMENNAR SKÝRINGAR SJÁ BL. NR. L1-A-1

BR. DAGS. Breyting REKNI. TEKNI.

VSÓ RAÐGJÖF

ÞORGARTÚN 20, 108 REYKJAVÍK, Sími 595-9200, Sími 595-9210, Sími 595-9215, Netfang vao@vso.is

Grjóthólsbraut 14
Grímsnes- og Grafingshreppi

HITAKERFI, GÓLFHITI
1. HÆÐ
GRUNNMYND OG SÉRMÝND

MANNADEIKNL ENI/PH
YFIRÁRÐ
SAMÞYKKT
KY.
300817-0909

KVARNR. 1:50 (A1), 1:100 (A3)
VERKFR. 1:50 (A1), 1:100 (A3)
TEKNI. NR. REYKJAVÍK 12.07.2012

11252 L4-G1-1