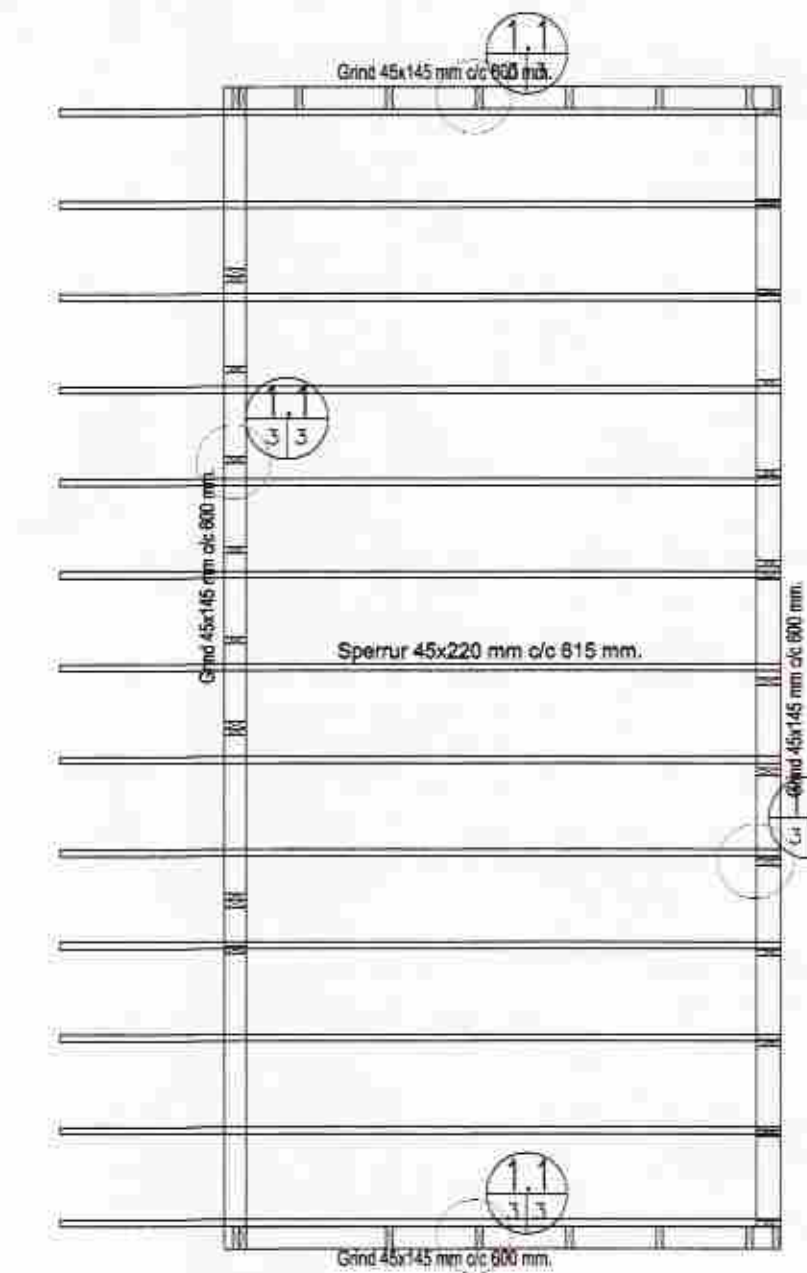
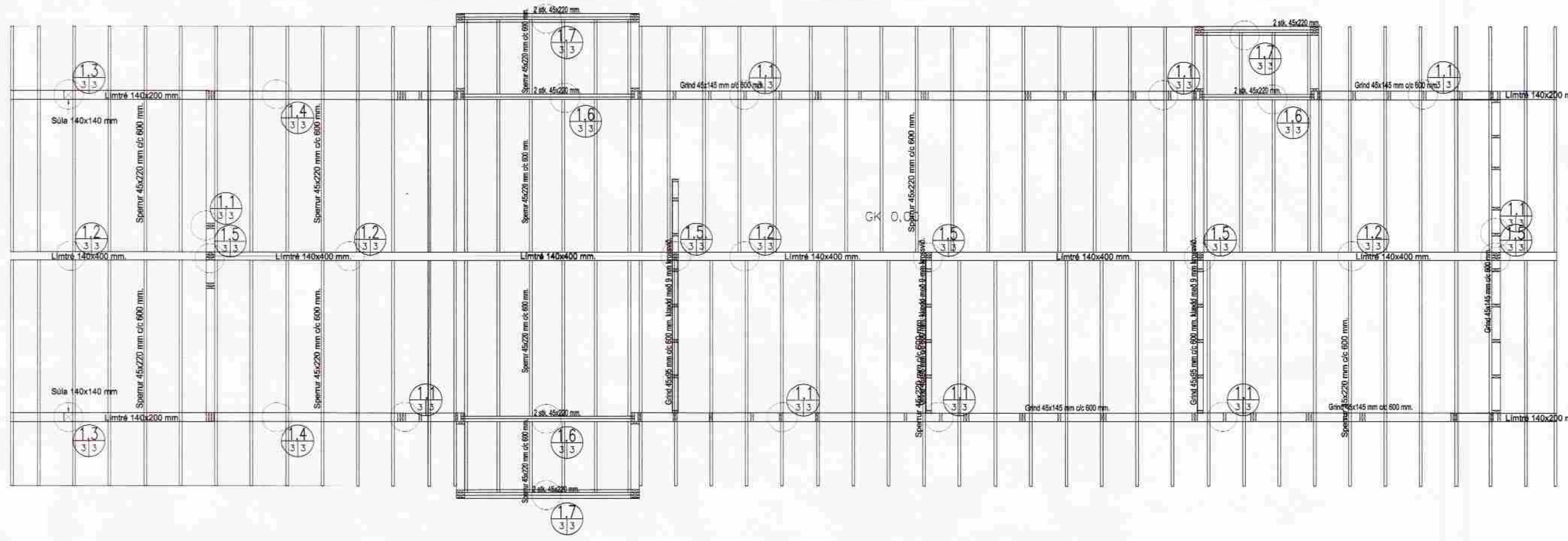
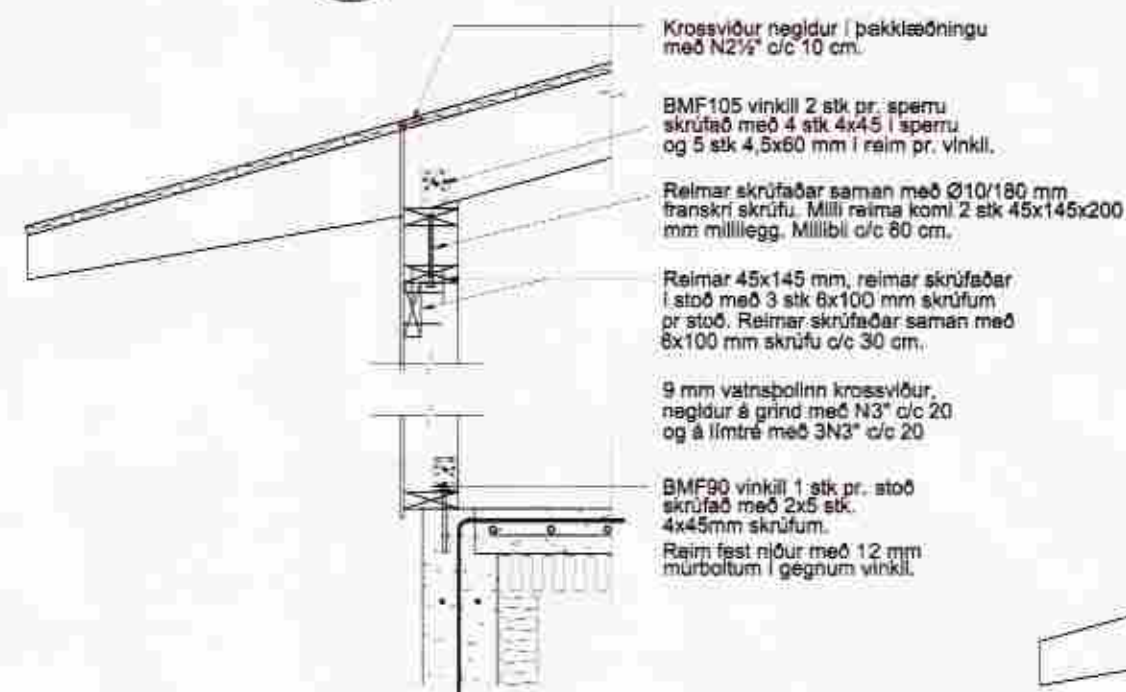


Burðarþol: Grunnmynd og sperruþlan. 1:50.



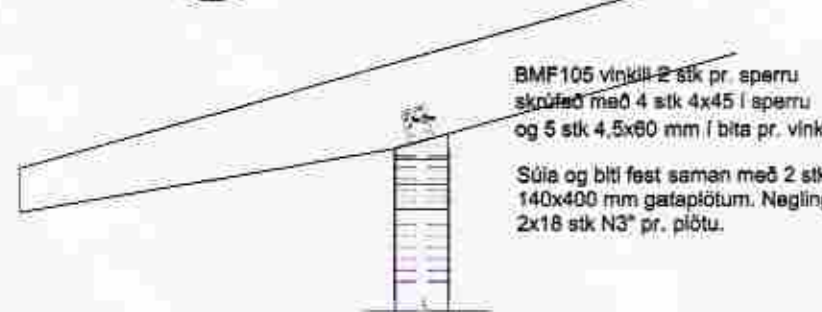
1.1. SÉRMYND 1.1. 1:20.



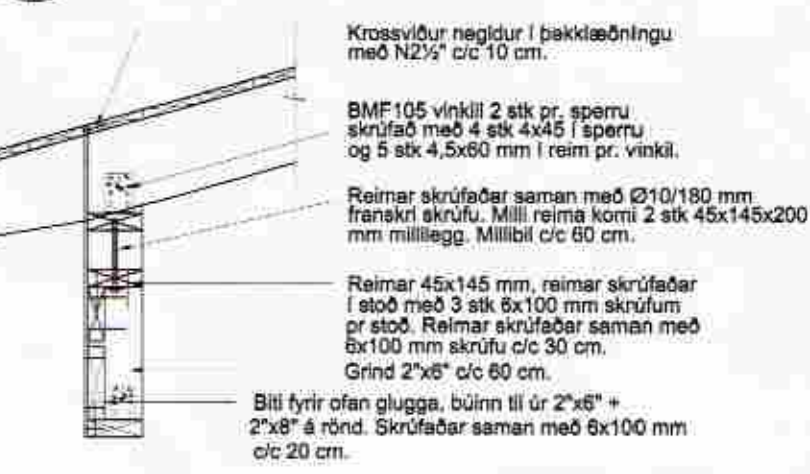
1.2. SÉRMYND 1.2. 1:20.



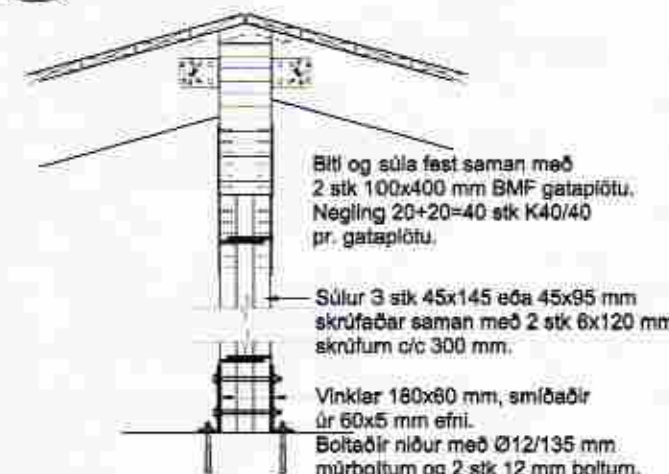
1.3. SÉRMYND 1.3. 1:20.



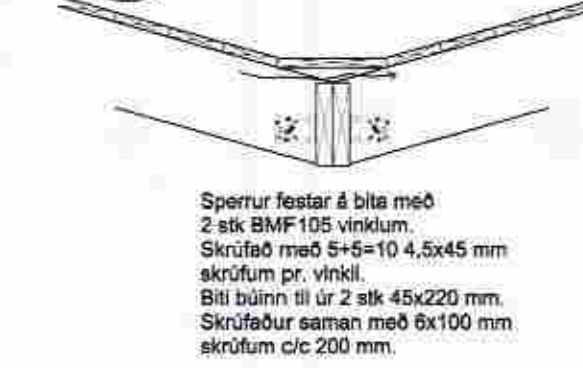
1.4. SÉRMYND 1.4. 1:20.



1.5. SÉRMYND 1.5. 1:20.



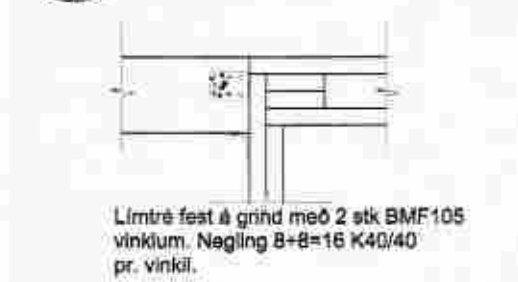
1.6. SÉRMYND 1.6. 1:20.



1.7. SÉRMYND 1.7. 1:20.



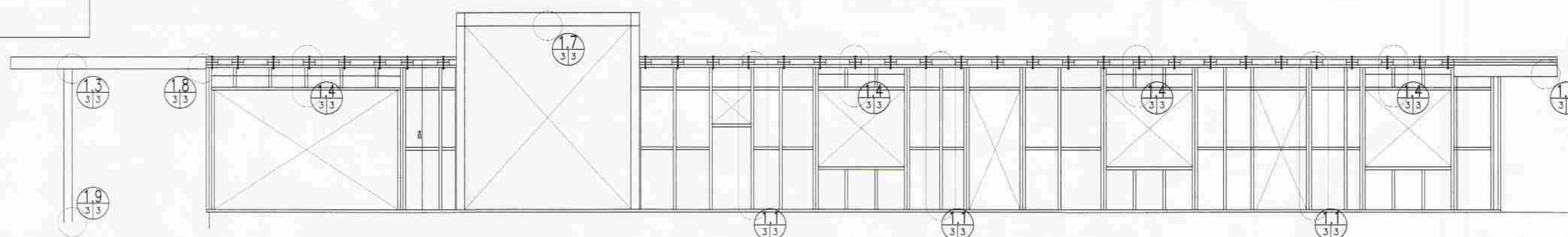
1.8. SÉRMYND 1.8. 1:20.



1.9. SÉRMYND 1.9. 1:20.



Burðarþol: Hliðarmynd. 1:50.



MÖTTIÐ
12 MARS 2012
Gösta Vífilsson
Byggingarkonur, Arkitekt og Plöður

Heimilt er að nota K40/40 kambasum í stað 4,5x45 mm skruflna.

A: 2.2.2012. GV (reynartekning sérmynda).

TEIKNISTOFAN ÖDINSTORA,
VERKFRÆÐISTOFA ehf.
TÓV
Öðinsgötu 7
101 Reykjavík
Netfang: tov@ta.is
Sími: 510 2211 Fax: 510 2201

Verkefni: Grjóthálsbraut 12, Grímnes- og Grafingshreppi.
Heiti: Burðarþol: Grunnmynd sökkla og sérmyndir.

Hönnun: VÍFILL ÖDDSSON
kt. 101237-3629
GÚSTAF VÍFILLSSON
kt. 231163-5069
VERKFRÆÐINGUR
FVFI - FRV
VERKFRÆÐINGUR
FVFI

Áritun aðalhönnuðar:

M. -
R. G.V.
T. G.V.
Dass: Sept. 2011. Nr. 1378-1-3A.