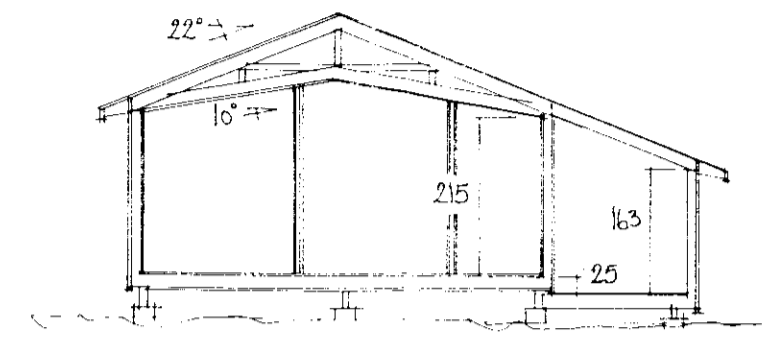
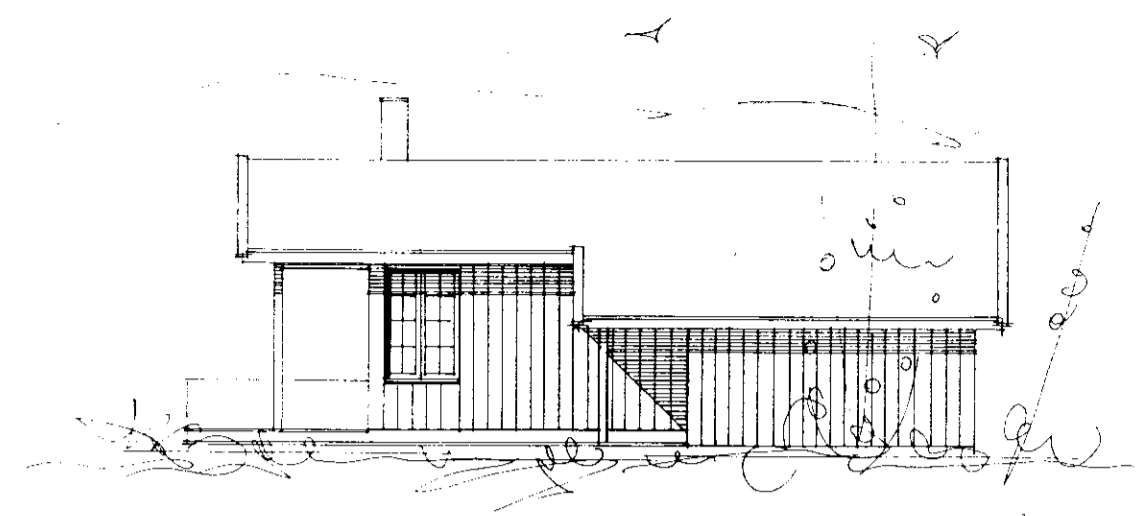
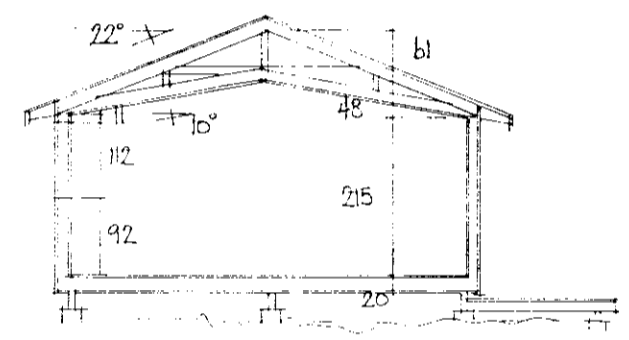
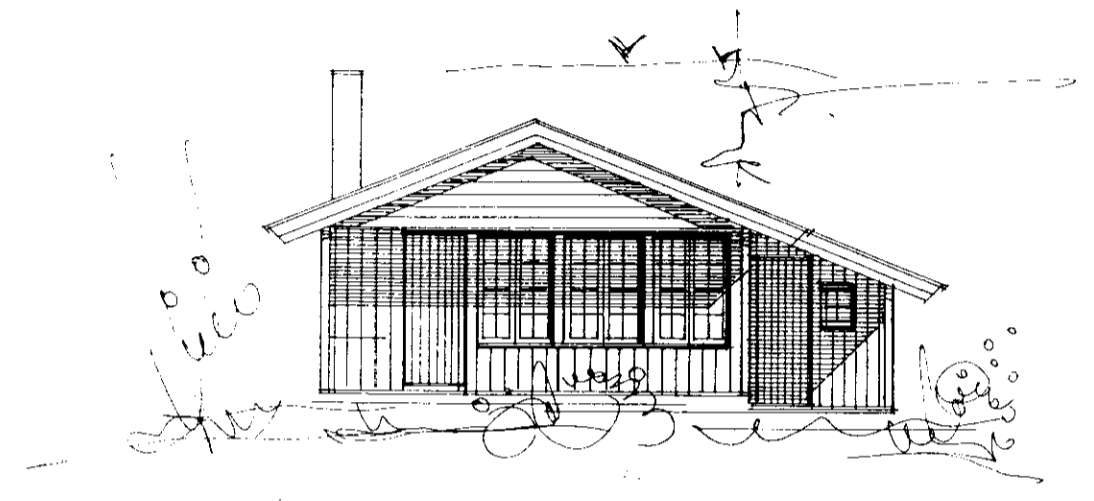


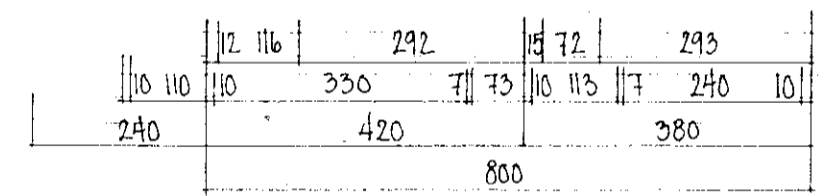
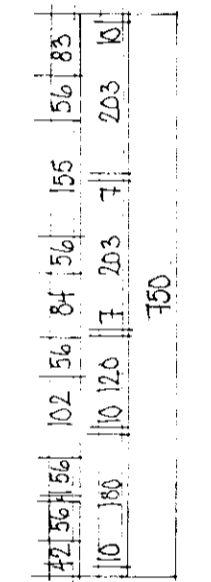
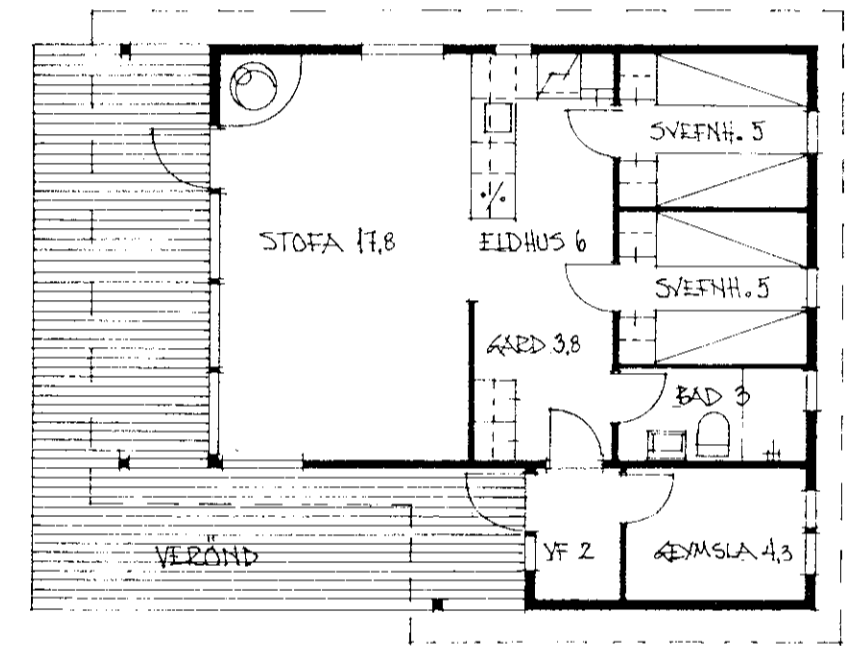
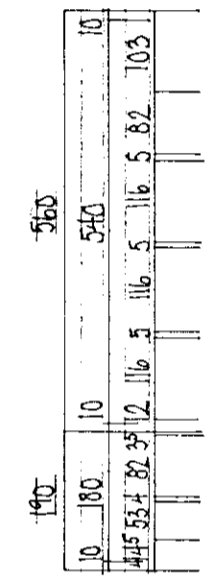
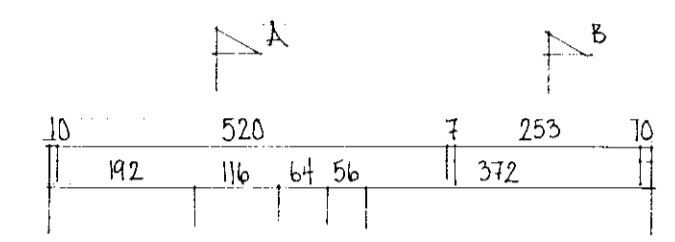
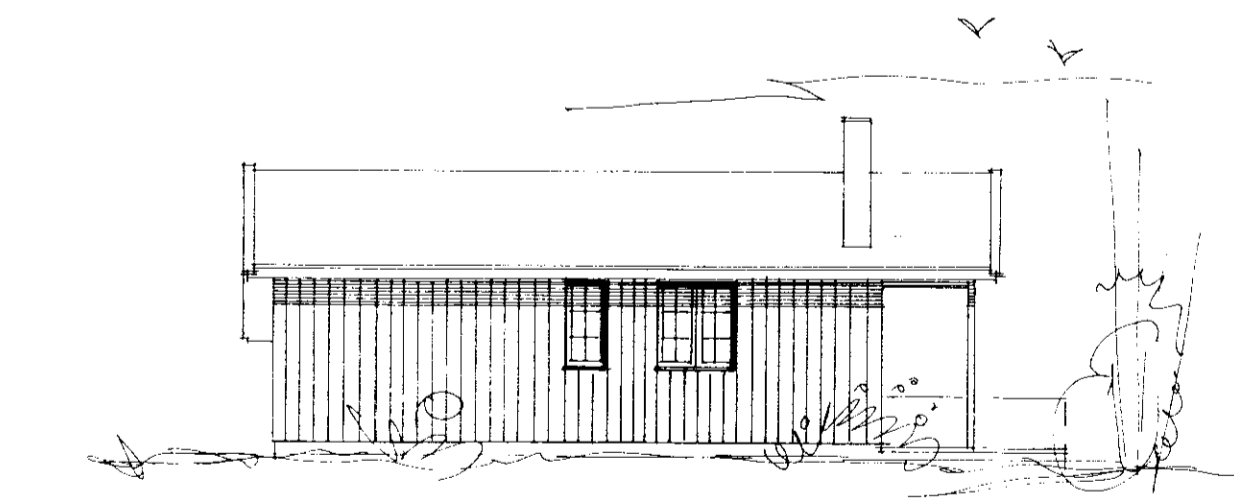
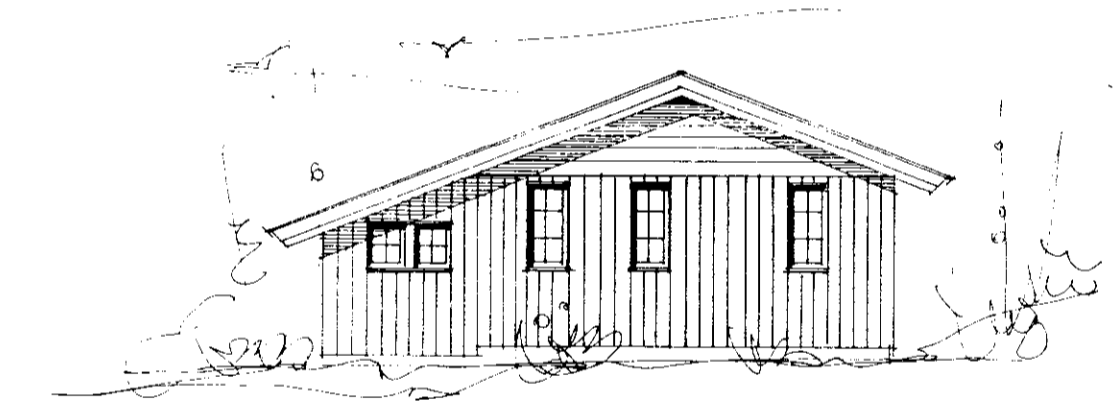
Samp. 8/4 '92  
 Håkan Ericsson



B-B.



A-A.



A

B

TYPE: OLAV ISLAND +  
 PLAN • SNITT • FASADER. M. 1:100.  
 BRUTTO GRUNNFLATE 52,0 M<sup>2</sup> • VOLUM 142,7 M<sup>3</sup>.  
 JULI 1991. CLAUD SVANSTRÖM. SIV. ARK. MNAL.  
 Håkan Ericsson arkitekt