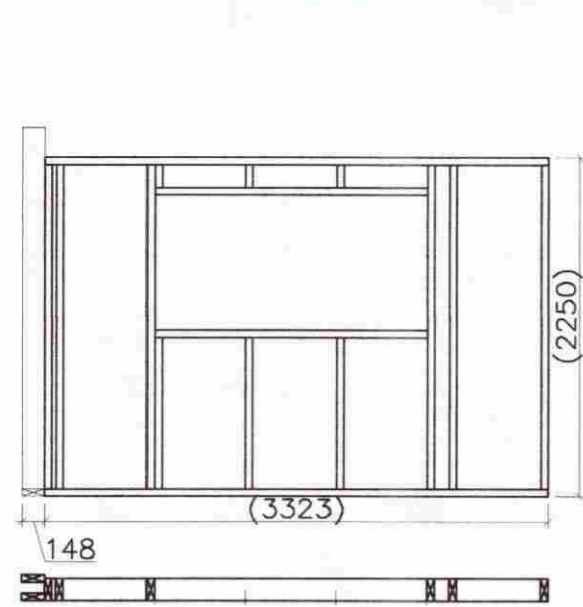
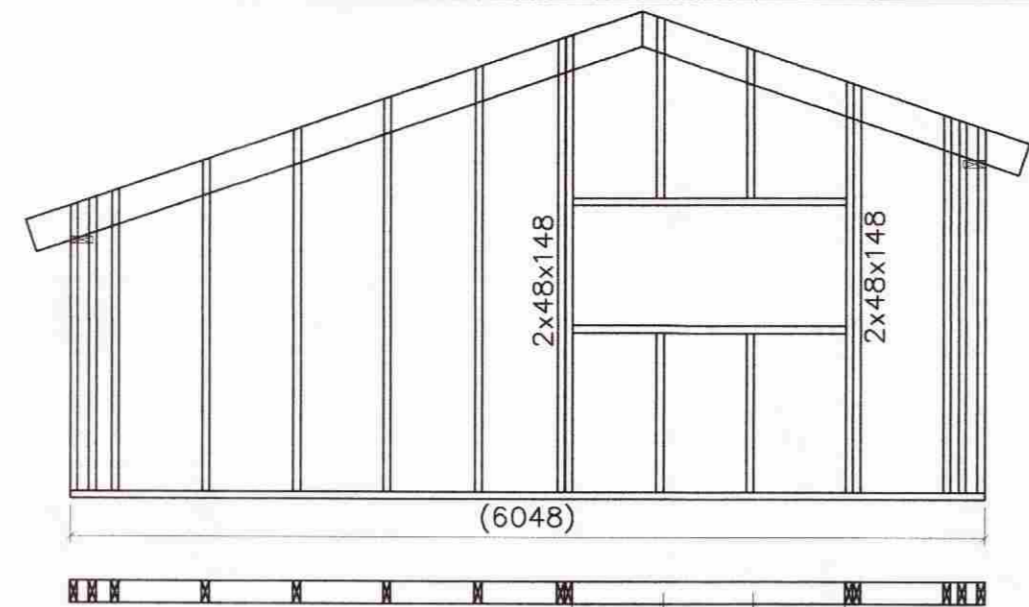


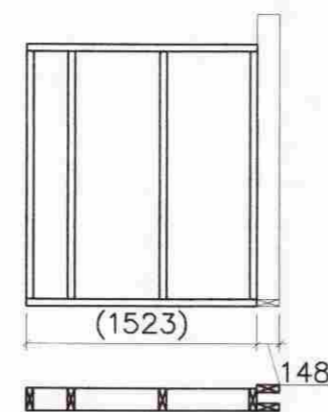
MÓTTEKID
 21 APR. 2009
[Signature]
 Byggingafultrúi uppsv. Amessýslu og Flóah.



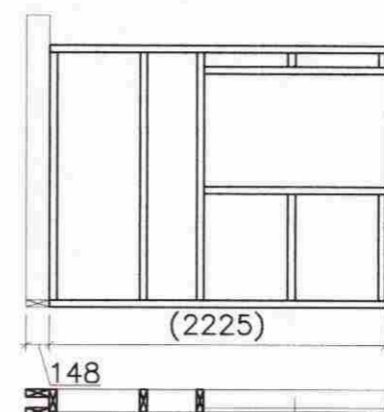
Grind 1



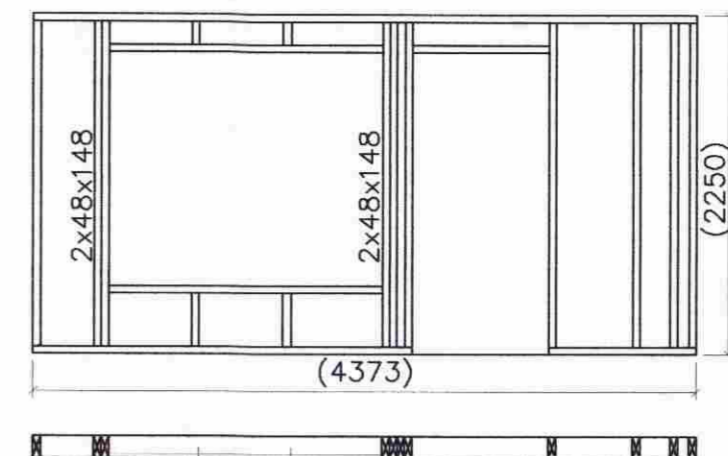
Grind 2



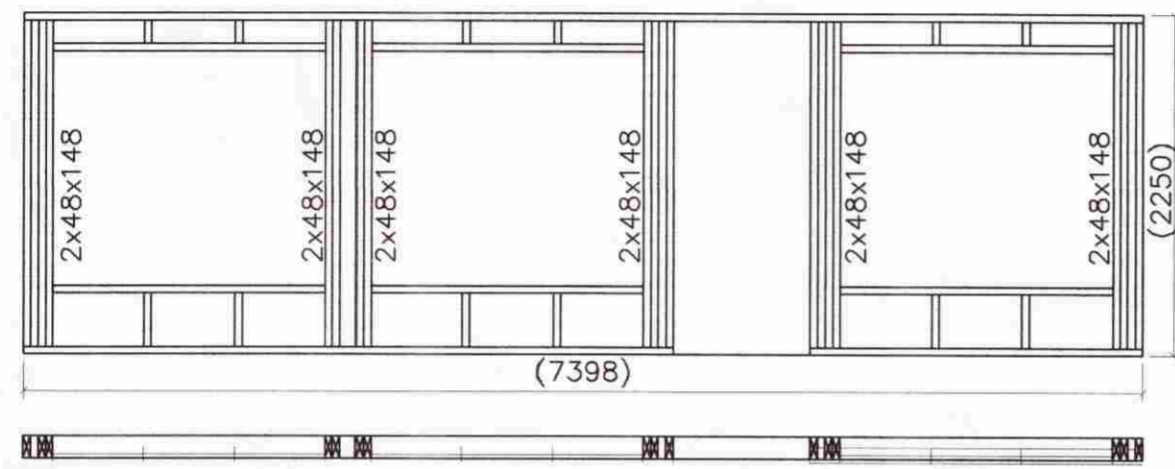
Grind 3



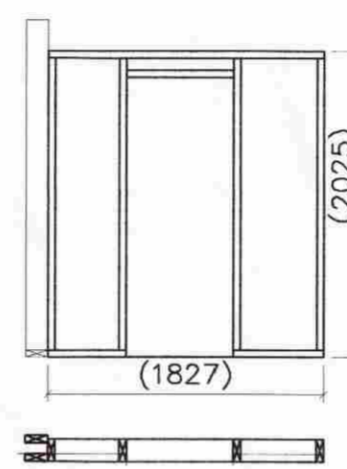
Grind 4



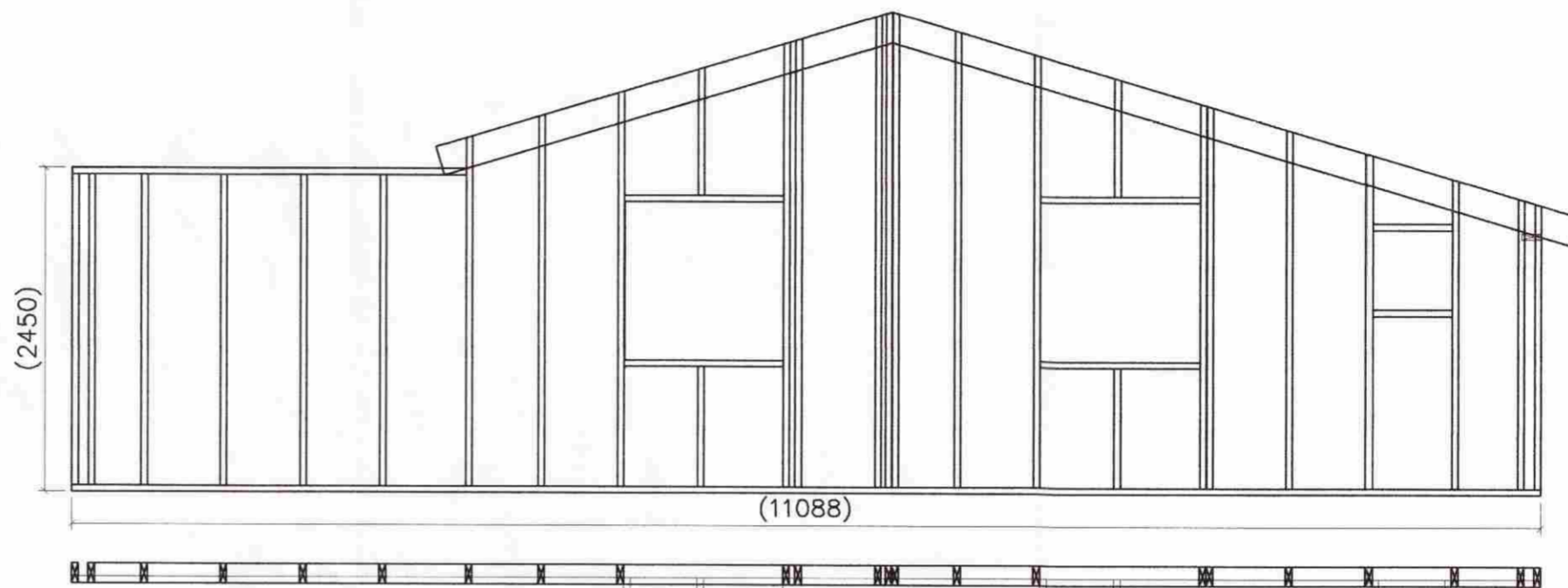
Grind 5



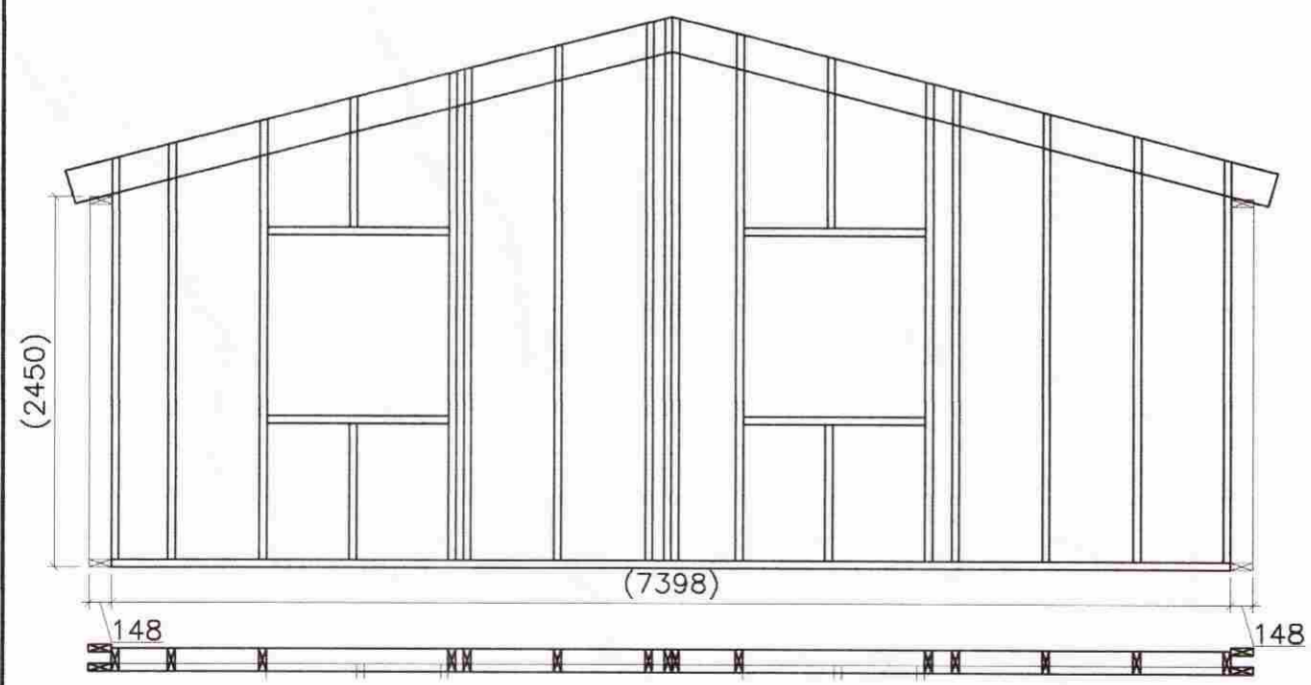
Grind 6



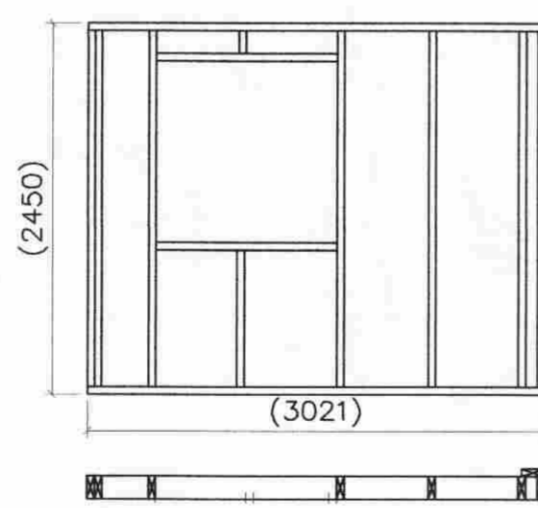
Grind 7



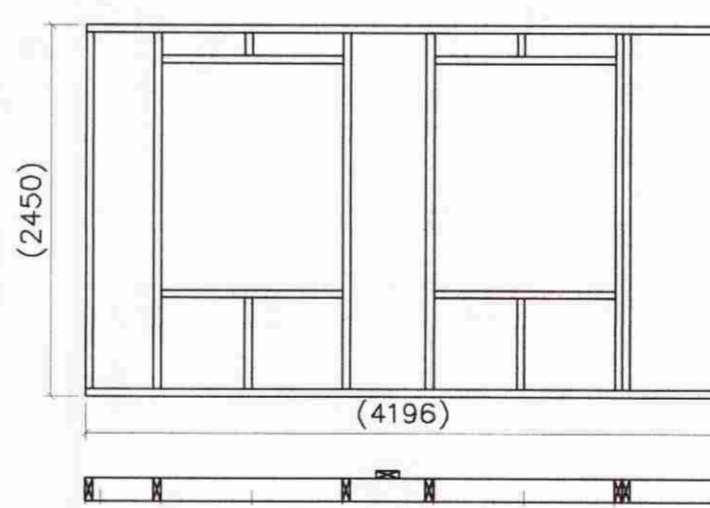
Grind 8



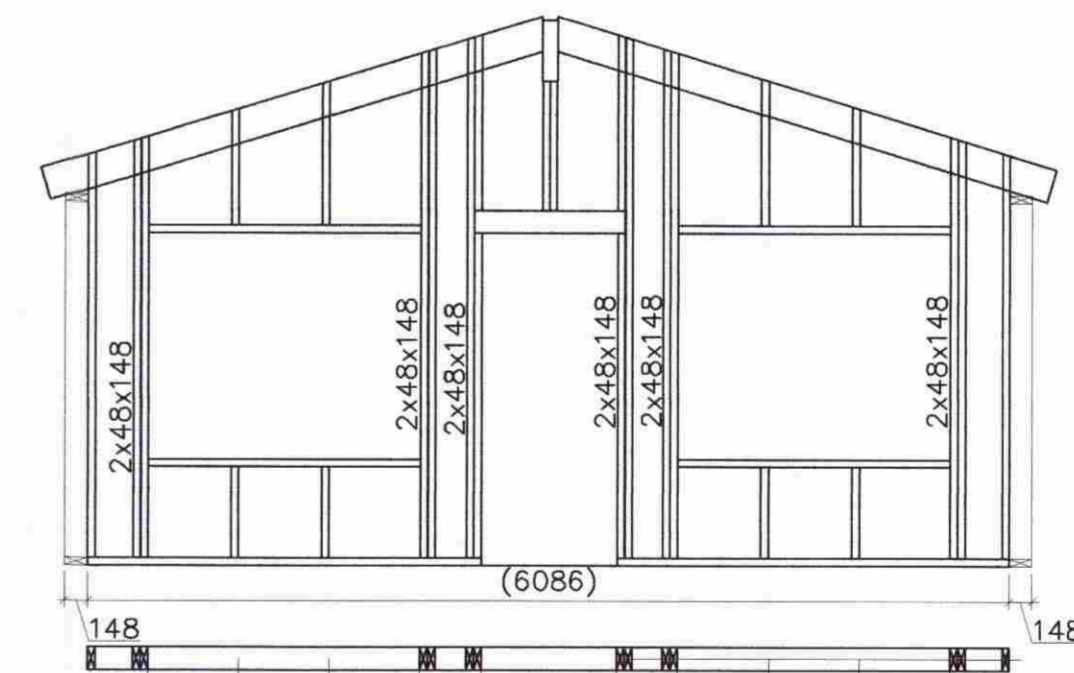
Grind 9



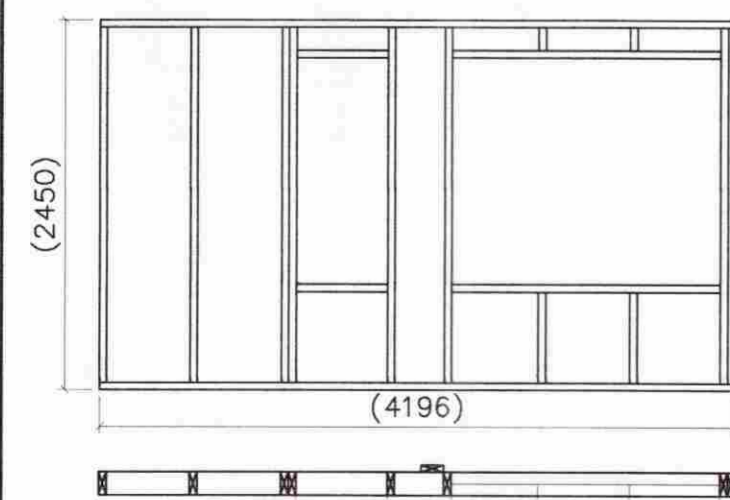
Grind 10



Grind 11



Grind 12



Grind 13

Öll mál skulu staðfest á staðnum áður en smíði hefst

| Breytingar | | | KIDJABERG 60 | |
|------------|-------|------|--|--|
| Nr. | Dags. | Nafn | | |
| | | | Verkfræðistofa Þráinn & Benedikt Laugavegi 178, 105 Rvk. Sími: 553 1770, 568 7775, Fax: 568-7701 Netfang: verkfraedistofa@verkfraedistofa.is | |
| | | | Burðarvirki veggir Grindur | |
| | | | H BS T HS S | |
| | | | M 1:50 | |
| | | | Nr. B103 | |
| | | | Dags. apríl '09 | |
| | | | 080149-3609 | |
| | | | 090638-4839 | |

[Signature]