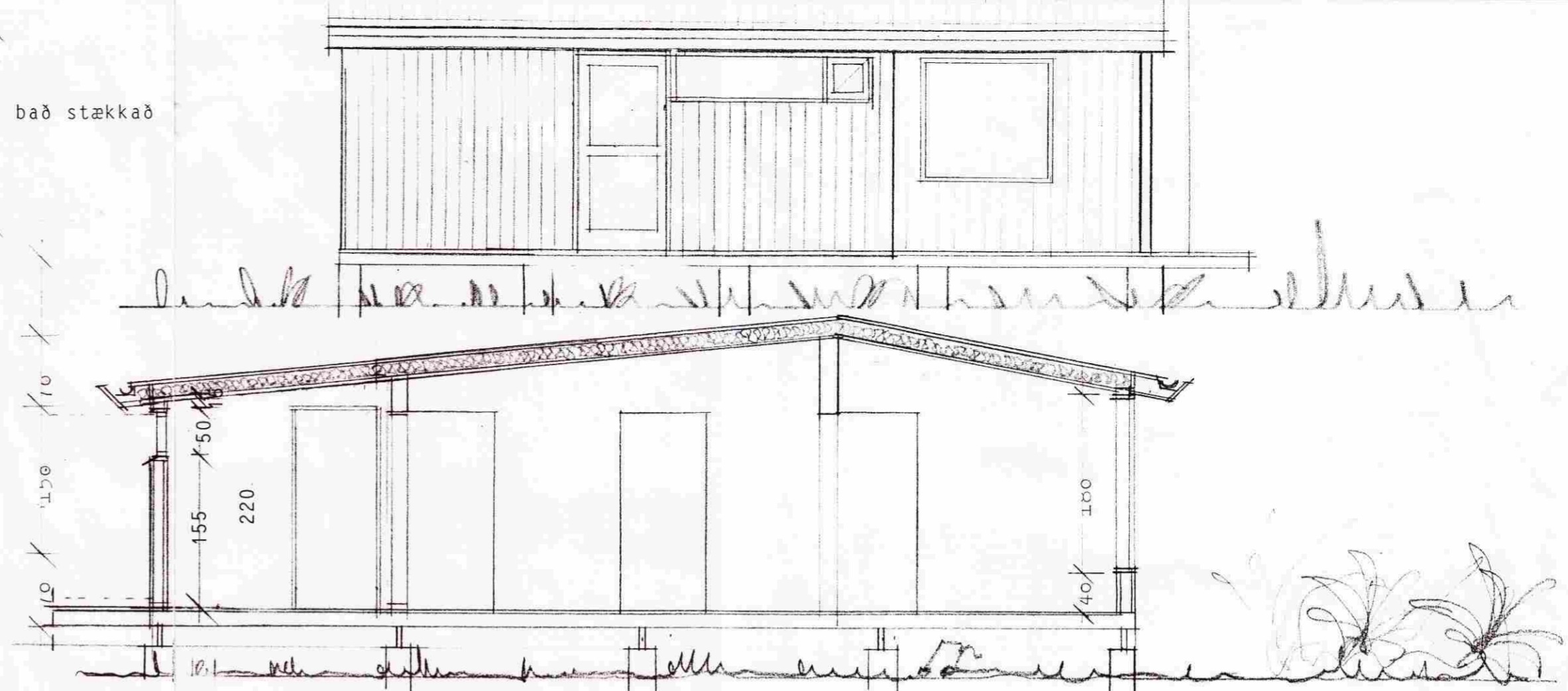
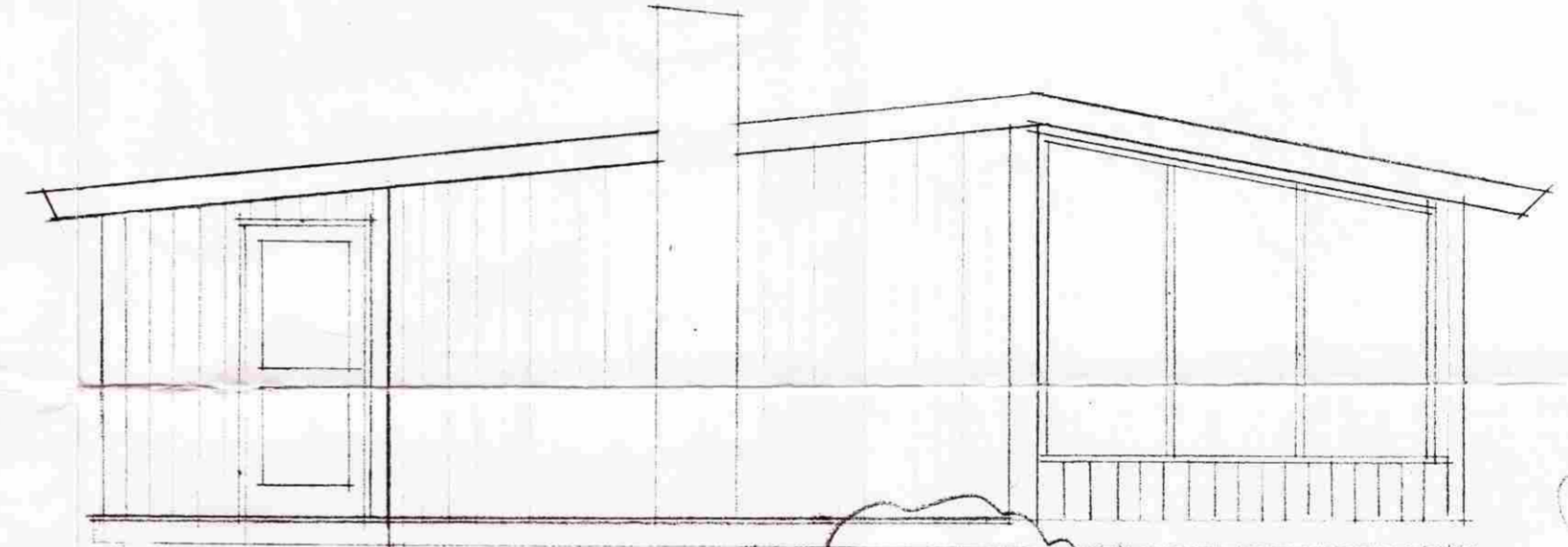


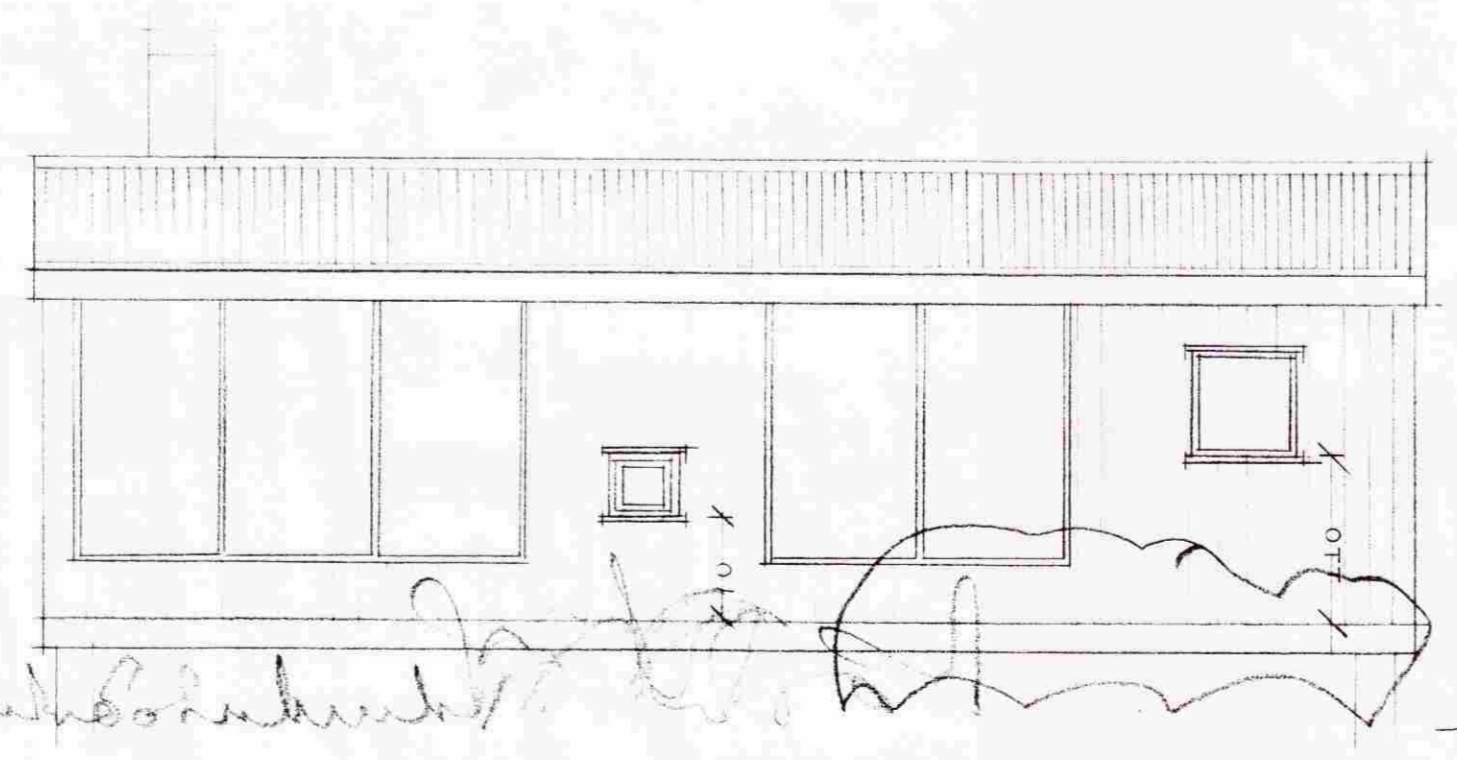
grunnmynd



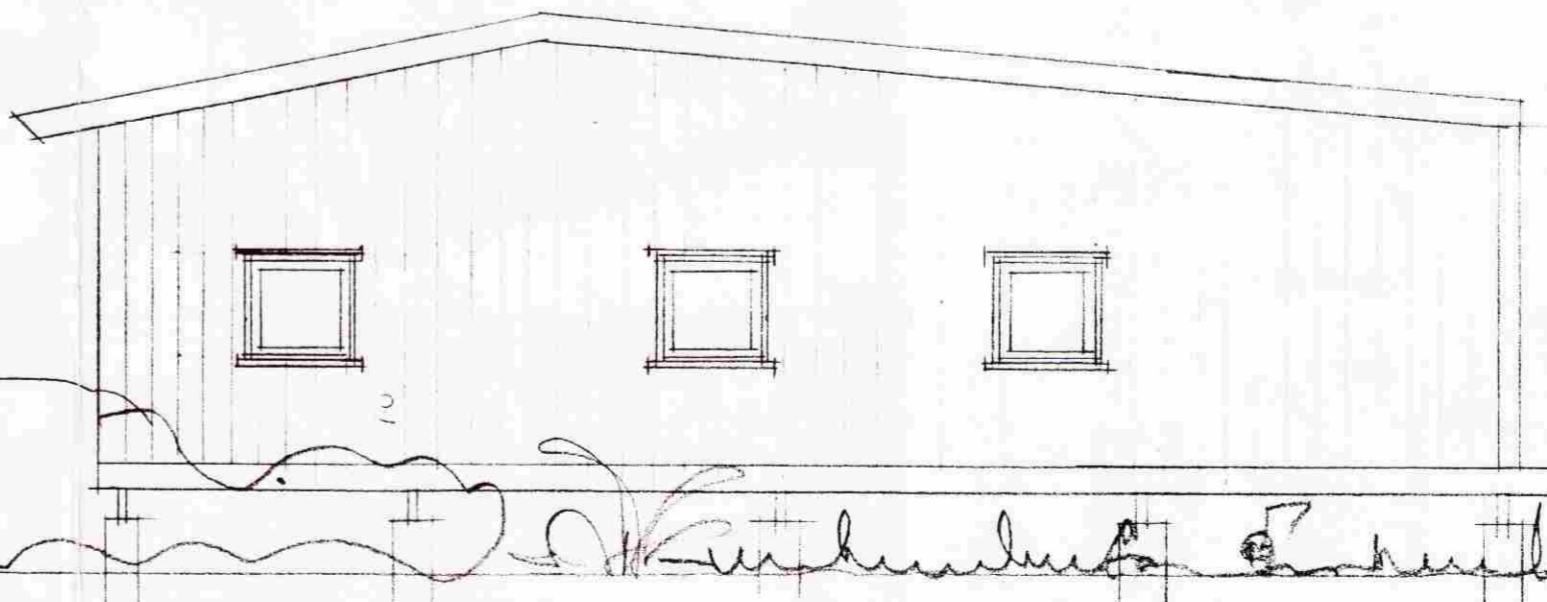
sneiðing



utlit til austurs



utlit til norðurs



utlit til vesturs

22.07.'98
 Húsasmiðameistarar
 Baldur Þór Baldvinsson 190641-2959

Breytt: 25.05.1998
 Stækun skáli
 7.2 m² 15.8 m³

VERK	Sumarhús í Hestvík við Þingvallavatn	Arkitektastofa	Finns Björgvinssonar og Hilmars Þórs Björnssonar
EFTIR	grunnmynd, sneiðing og utlit	Suðurgata 8A	101 Reykjavík
MÆLIKVARÐI	1:0	DAGS	21.07.1998
TEKNI		TEKNI	NR