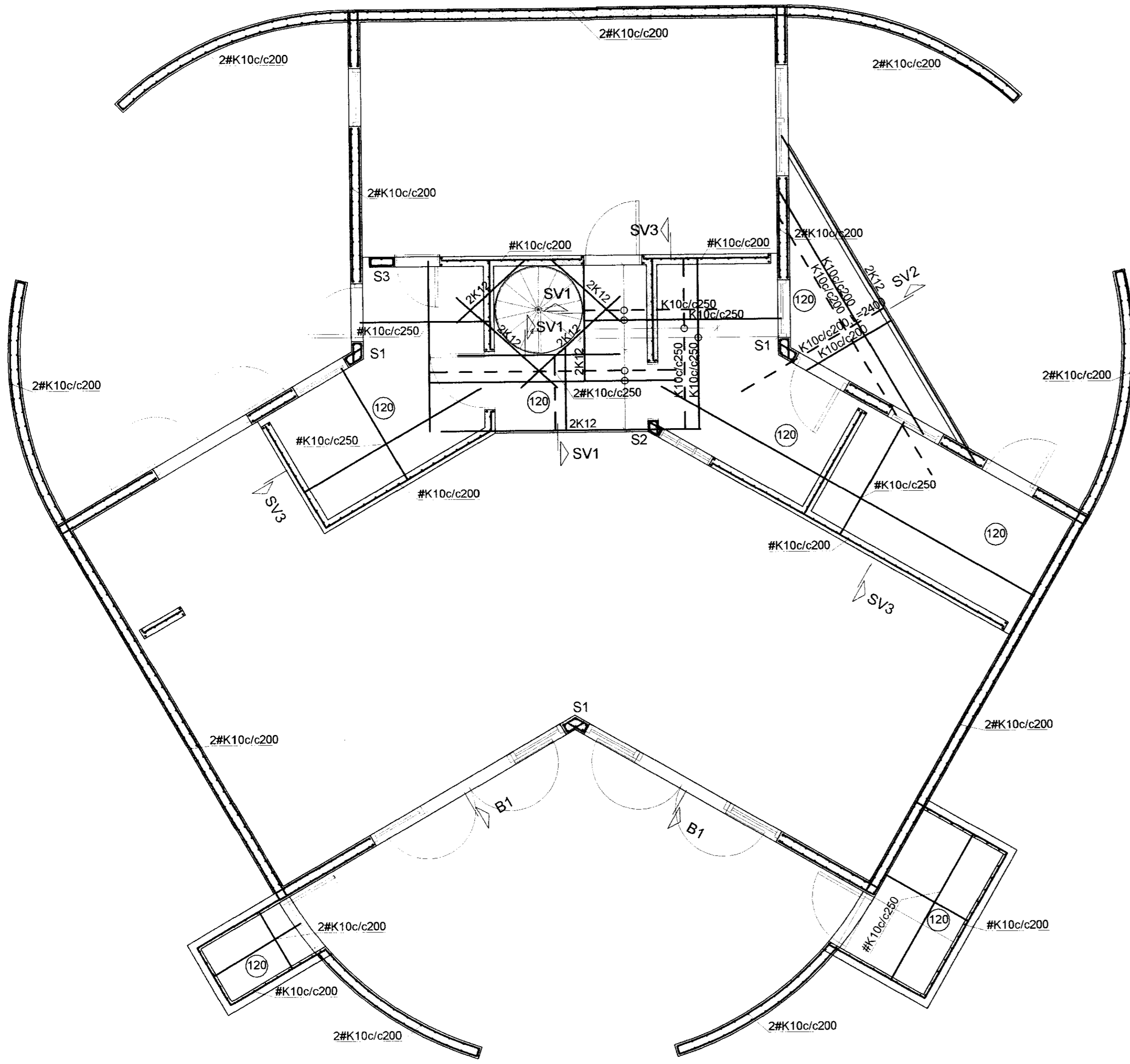
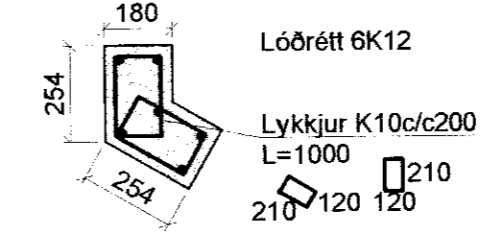


GRUNNMYND 1.HÆÐAR OG LOFT 1:50

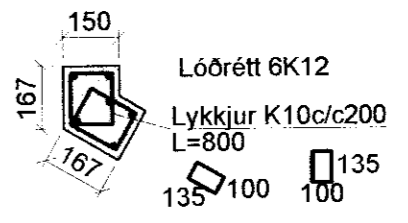
MÓTTÆKID  
 03. APR. 2010  
 Byggingafræðingur, Lausn, Annarséðju og Frátt.



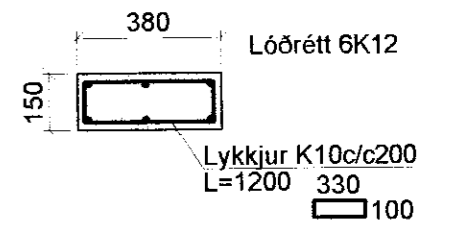
S1 1:20



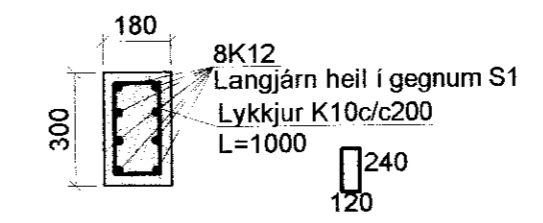
S2 1:20



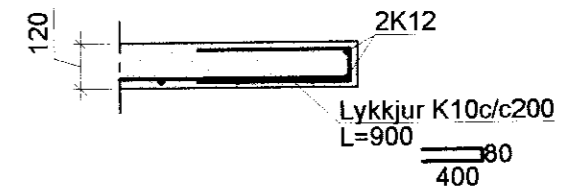
S3 1:20



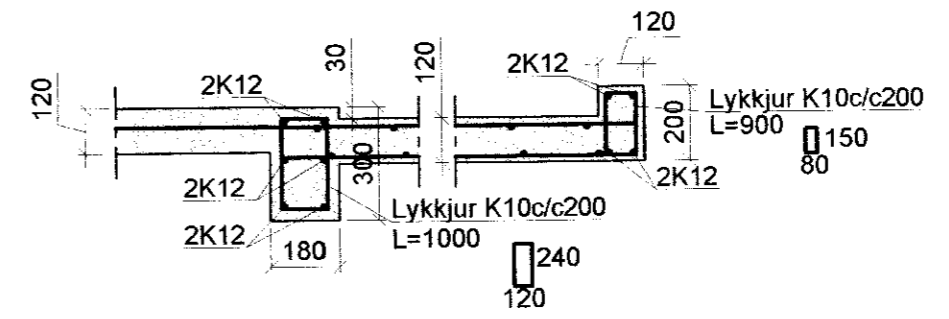
B1 1:20



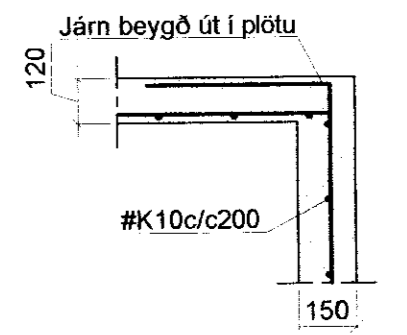
SV1 1:20



SV2 1:20



SV3 1:20



Steypa C30.  
 Sement > 350 kg/m<sup>3</sup>, vatnssementstala (v/s) <0.55, loftinnihald 5-6%, sigmál 80-100mm.  
 Steypa og steypustyrktarstól B500C skv. ÍST-14/DS-411.  
 Steypuhúla á jörnum: veggir úti 30mm  
 veggir inni 20mm  
 plötur úti 30mm  
 plötur inni 15mm  
 bitar 25mm

Meðfram dyrum, gluggum og opum komi 2K12, er nái minnst 600mm. út fyrir brúnir opa.  
 A: merkir 2#K10c/c500, L=1500mm, í efri og neðri brún plötu.  
 Hönnun og framkvæmd verksins skal vera í samræmi við gildandi staðla og reglugerðir.

Breytingar			NEÐAN SOGSVEGUR 18A	
Nr.	Dags.	Nafn	H	BK   T   HS   S
			<b>Verkfræðistofa Þráinn &amp; Benedikt</b> Laugavegi 178, 105 Rvk. Sími: 553 1770, 568 7775, Fax: 568-7701 Netfang: verkfrædistofa@verkfrædistofa.is	
			M	1:50
			Nr.	<b>B101</b>
			Dags.	maí '10
				090638-4839
				080149-3609