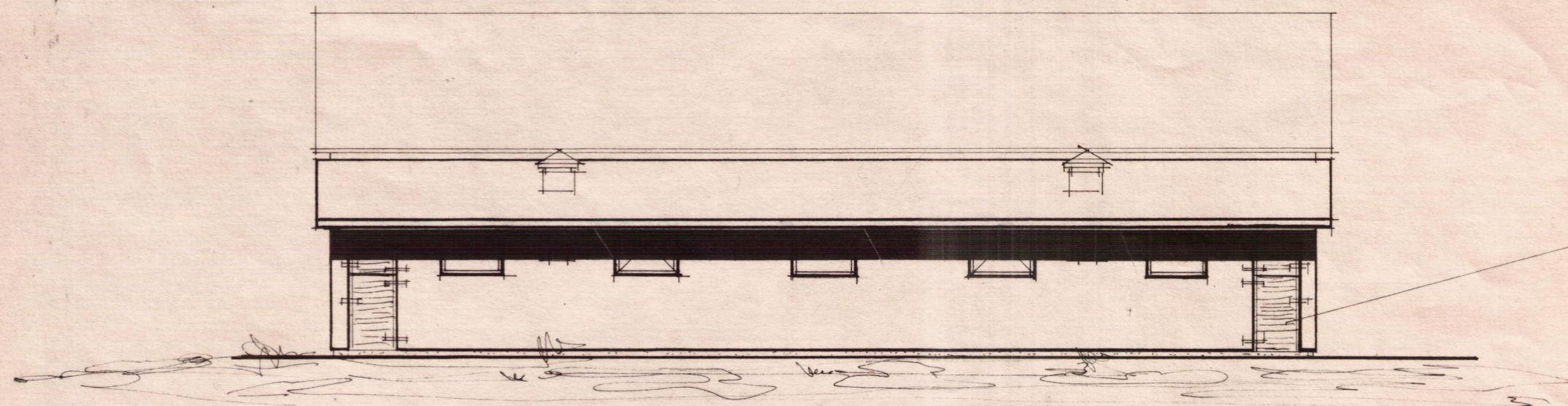


2 salur 4 klb - 10 m 30  
 Bili- IPE 24  
 Dyra bil- IPE 14  
 110 m 25 # máljón vegg

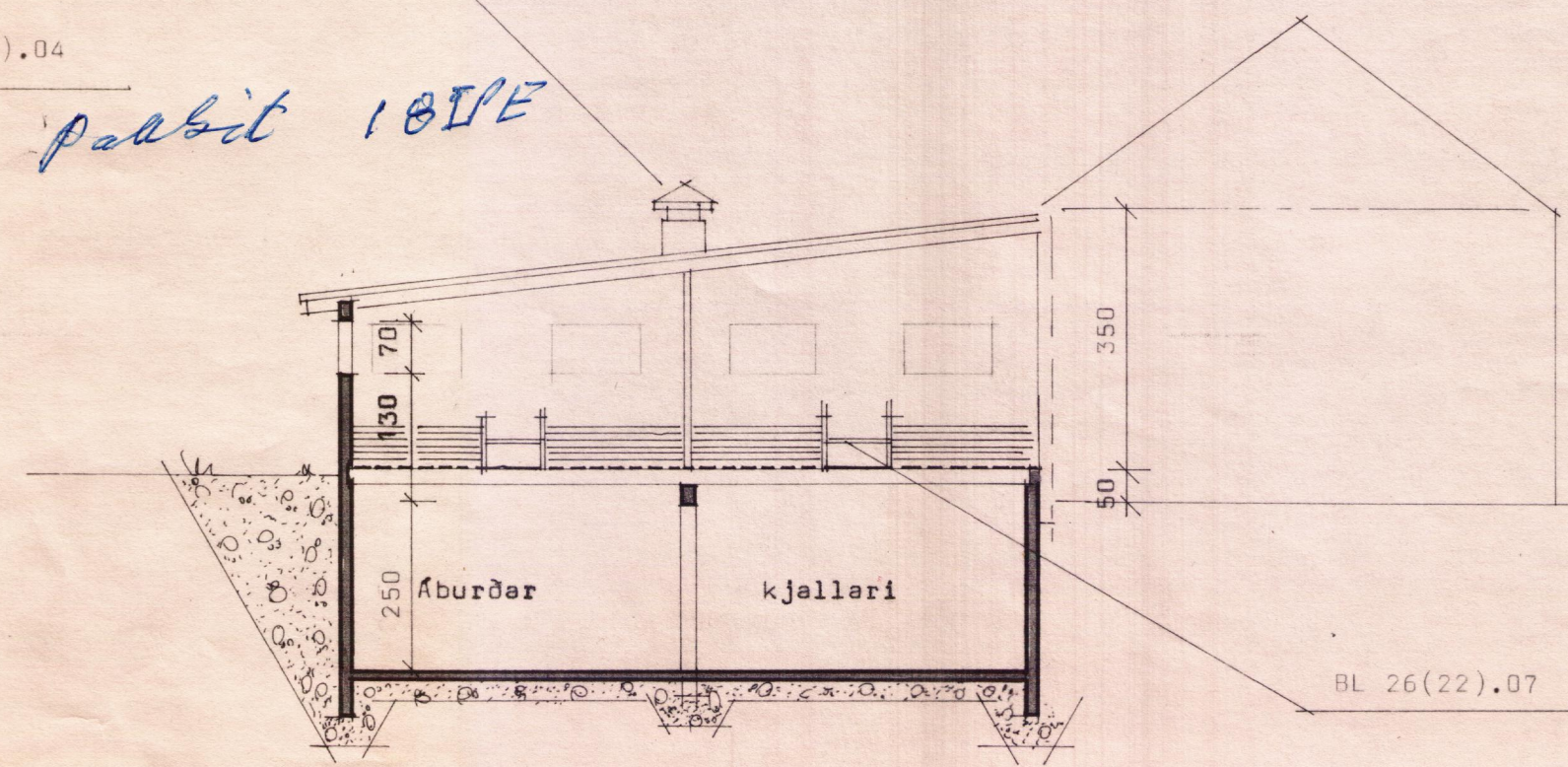
2 x 4" + 1 1/2 x 4"  
 spætt 2 x 4" m 60  
 st 4 83"

paðbit 10 IPE

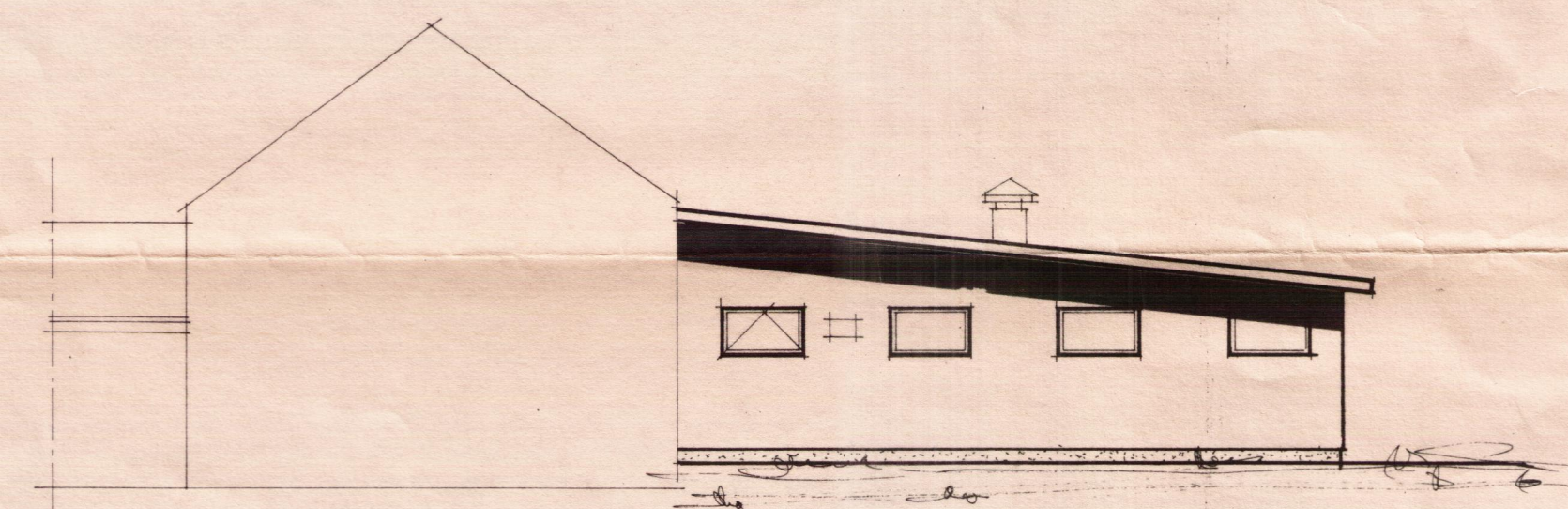


Fjárhús hliðarmynd

BL 26(31).04

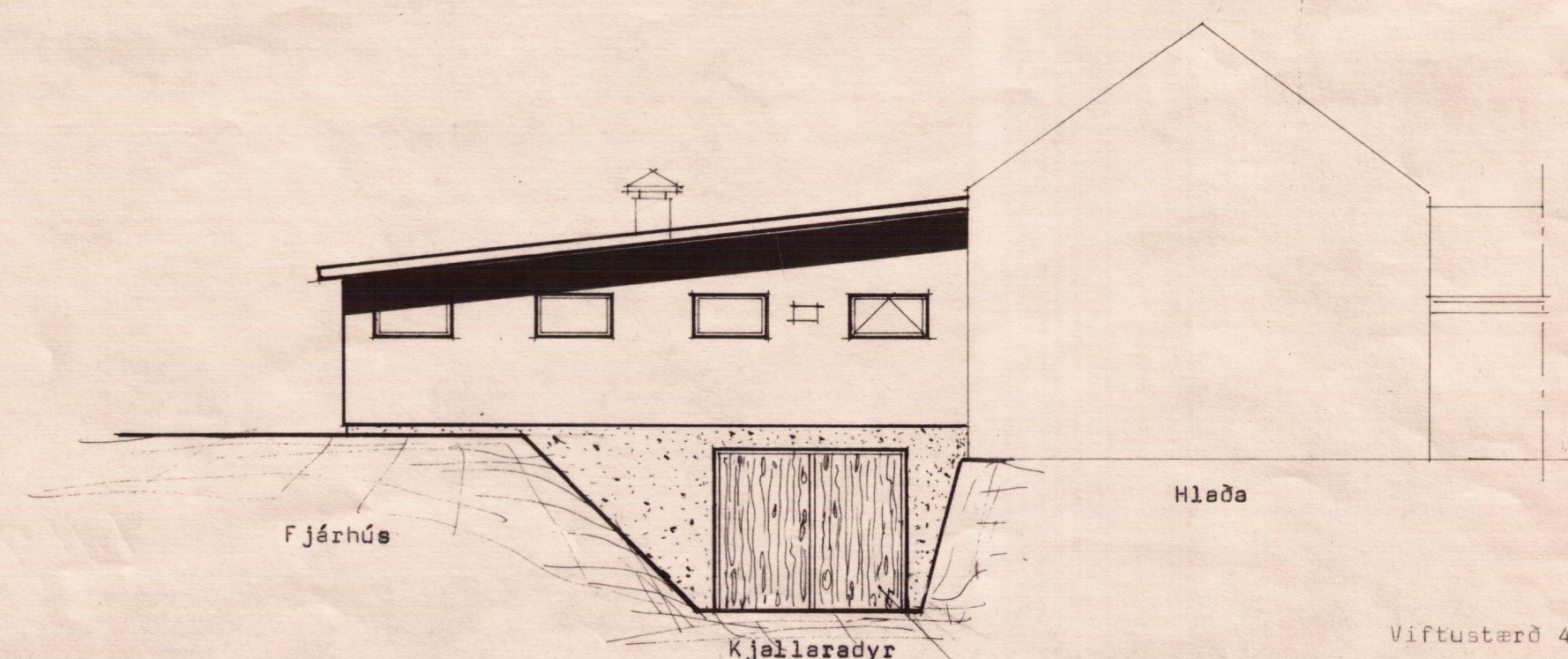


BL 26(22).07



Hlaða Fjárhús

BL 26(31).07



Fjárhús

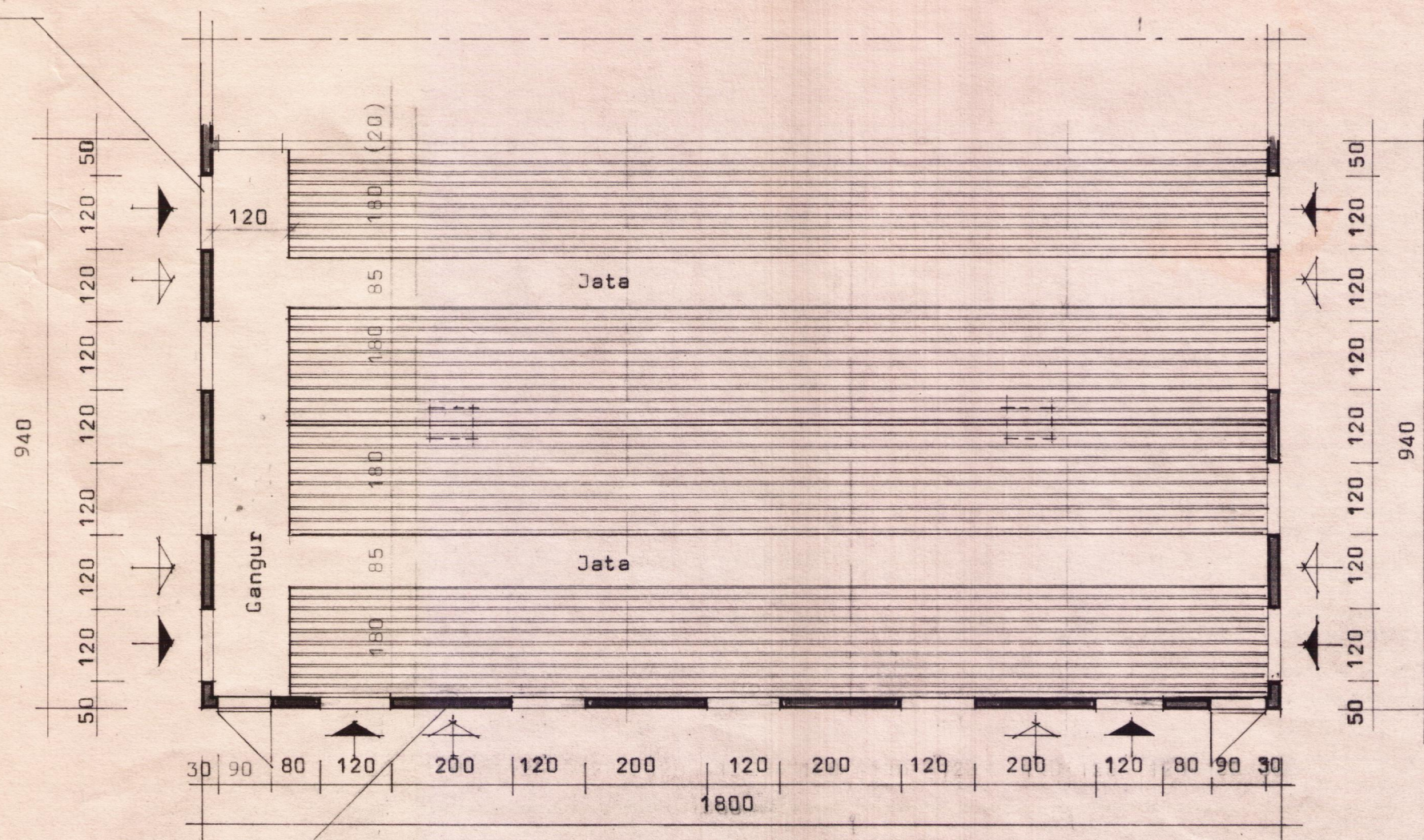
Hlaða

Kjallaradyr

Viftustærð 4000 m<sup>3</sup>/klst.

- ✦ Opnanlegur gluggi
- ✦ Loftræstiop í vegg.

BL 26(31).10



BL 26(21).13

1.11.77

**BL** BYGGINGASTOFNUN LANDBÚNADARINS  
 LAUGAVEGI 120, REYKJAVÍK, SÍMI 25444  
 DRMSSTADIR, GRÍMSNESHR., Árn.  
 Fjárhús fyrir 174 kindur  
 Grunnmynd snið útlit.

TEIKN. NR. 20-3059  
 BREYTT FRÁ  
 MÆLIKVARDI 1 : 100  
 DAGSETNING 7.10.77.  
 TEIKNAD ps

*Quemal Alþjóðarinn*