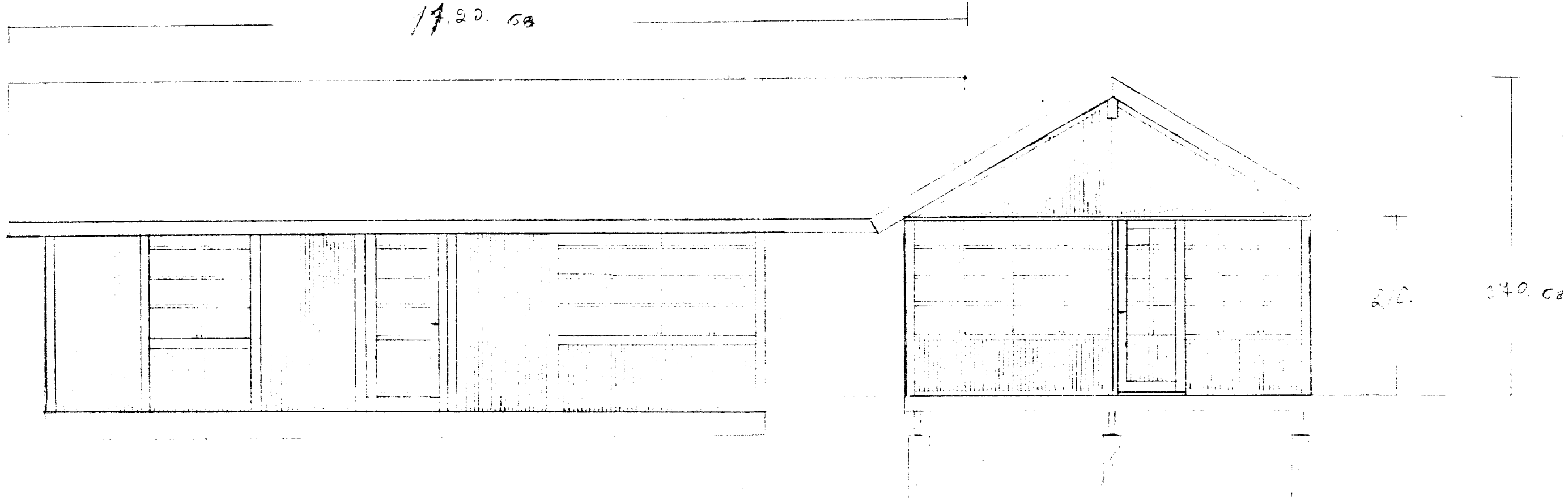
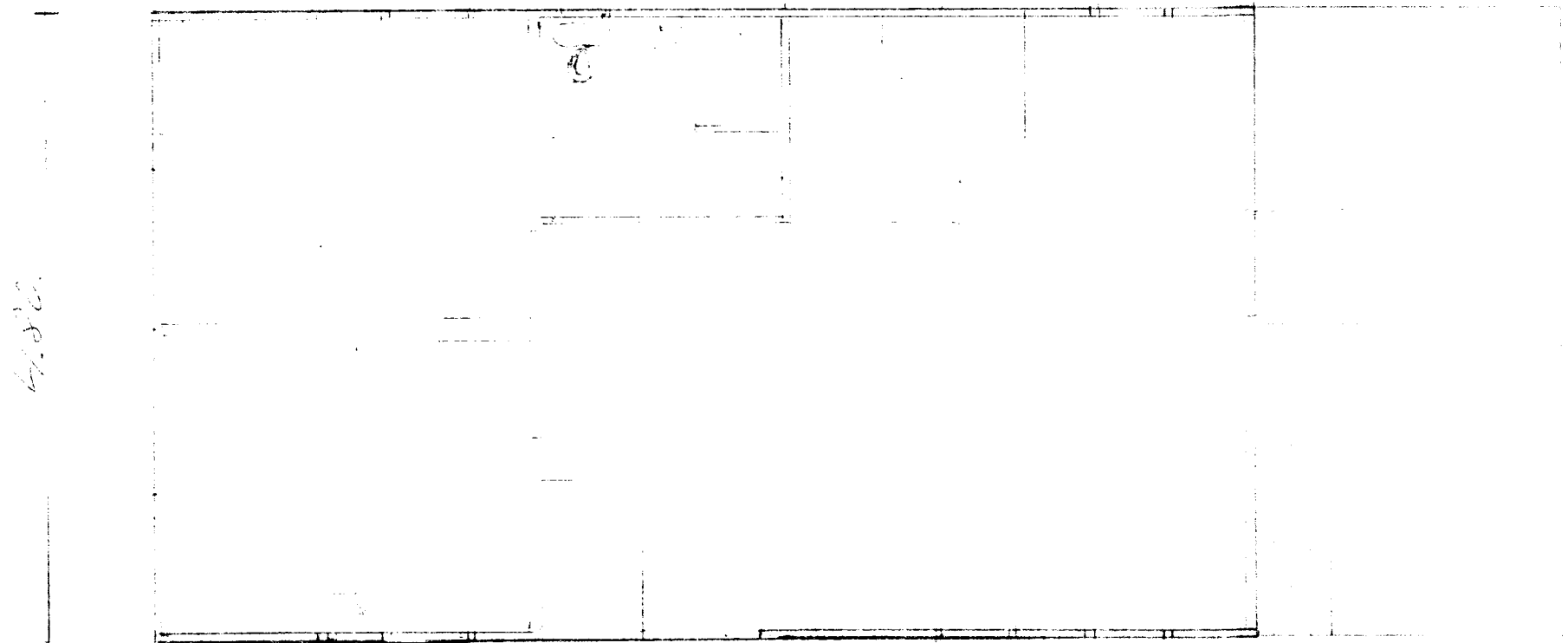


17.20. 68

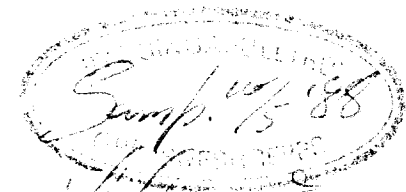


2.40. 3.40. ca



4.80.

8.40.



Hilmar Guðmarsson

Suma bústaður í Landi  
 Hraunkots grímsnesi  
 Lóð. no. 57.  $4.80 \times 8.40 = 40.32 \text{ m}^2$   
 Lögarkafi: Valdór Þósson Reykjavík  
 9/4. 1922. Tölur 6-1000 45-5446.