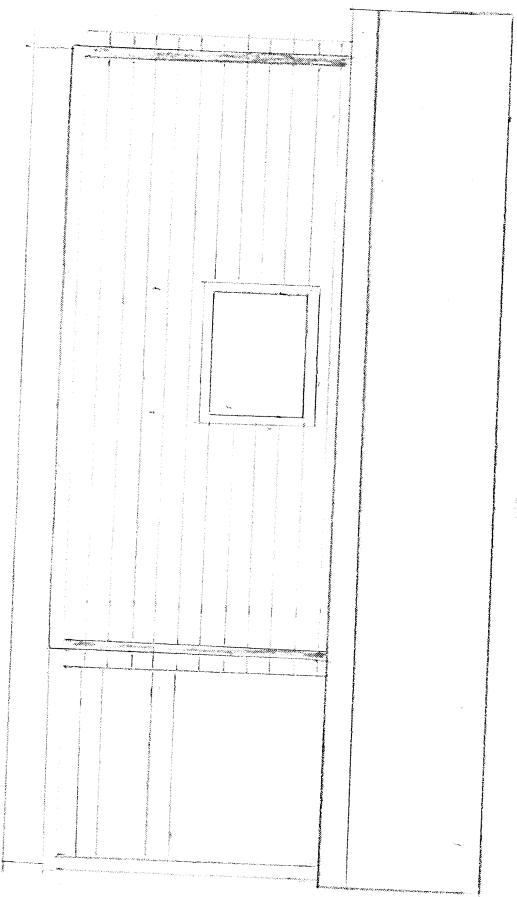
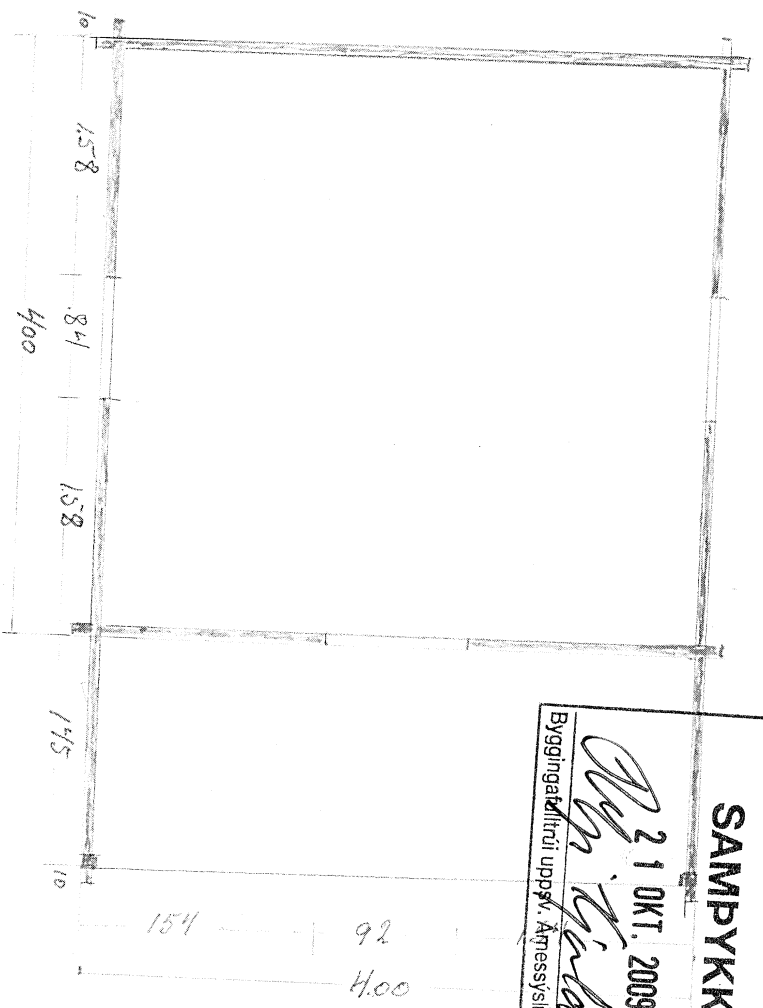
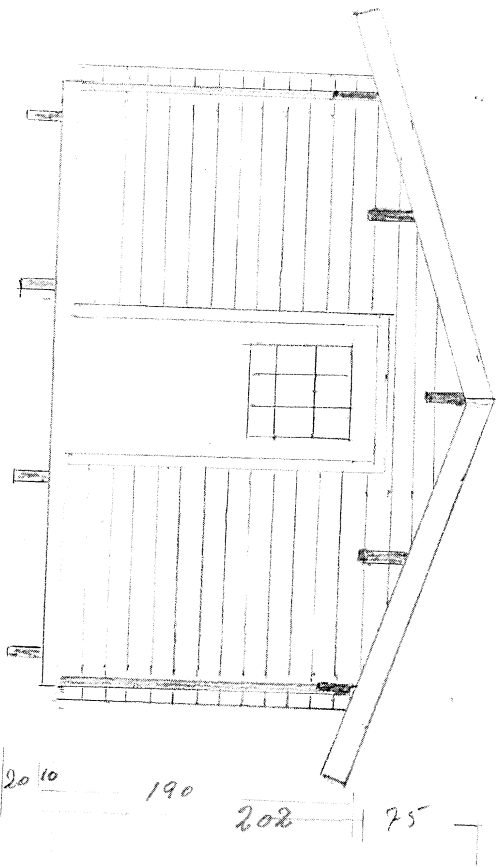


S.G. Bjálkshús

Drengar 2'x8"
 Bitar 2'x4"
 Spærur 2'x4"
 Bjálkaæðning,
 ummálað 2'x6"



SAMÞYKKT
 21 OKT. 2009
Alþj. Þorláksson
 Byggingafræðingur, Árnessýslu og Flóah.

Alþj. Þorláksson