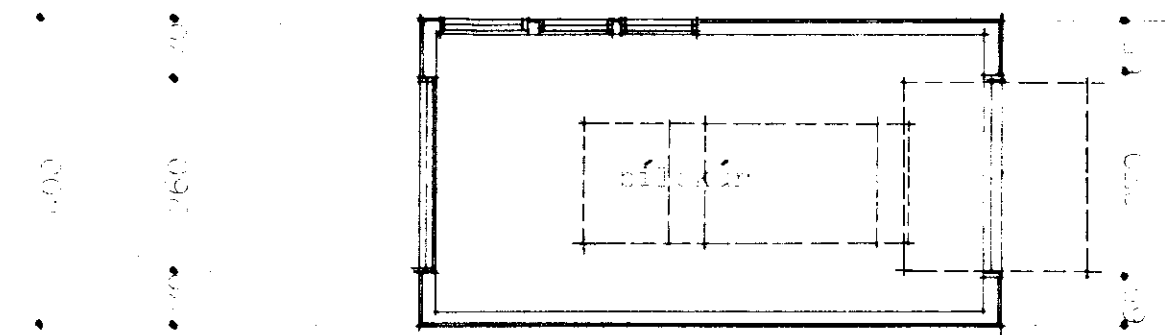
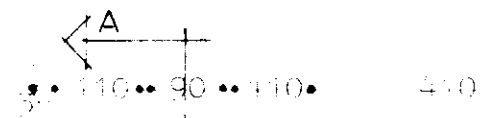
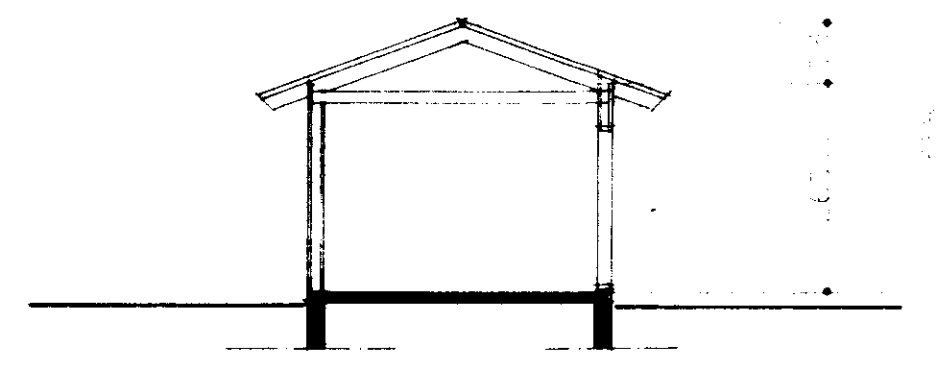


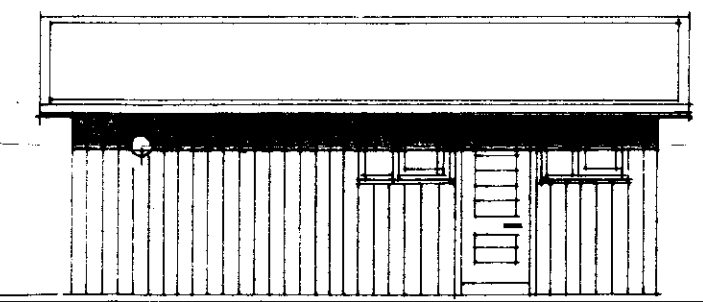
*Samþ. 14/11
Hanna Gunnarsdóttir*



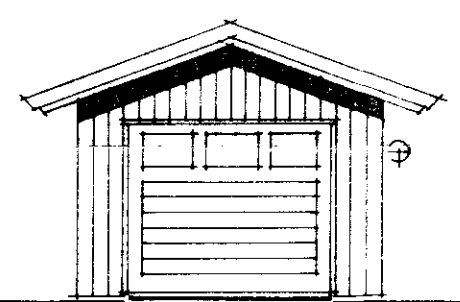
BRUNNMUND
skv. 1:100



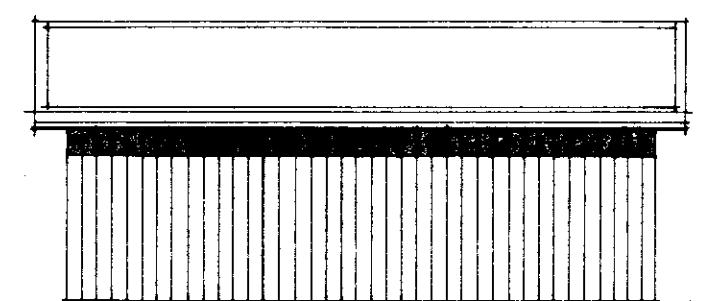
ÞVERSIÐI
skv. 1:100 A-A



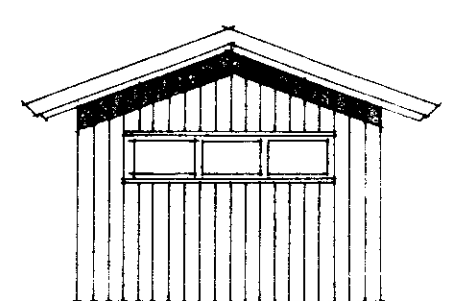
SUDURHLID
skv. 1:100



VESTURGAFL



NORDURHLID



AUSTURGAFL

SIÐARSTOFUR :

grundfl. m² : 21,5 m²
mál m² : 15,8 m²

MÁT — HÚS — NR. 100

HÚS BIRKIS V. KRISTYINSSONAR
ARNESÍ BÍLSKÓR Á LÓÐ
ÖNÚPVERJAHN.

skv. 1:100	TEIKN.NR.:
teikn. apríl 1966	03

ární friðriksson og páll gunnlaugsson
arkitektar
aðalstrætí 7 101 R sími 4 10 10

Hanna Gunnarsdóttir