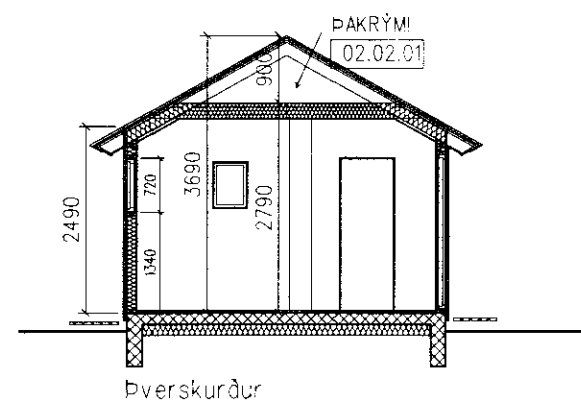
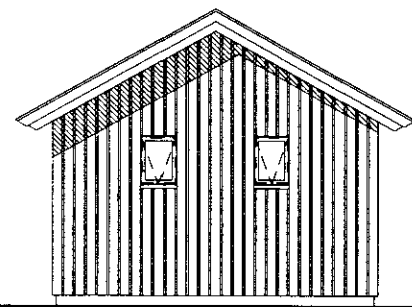


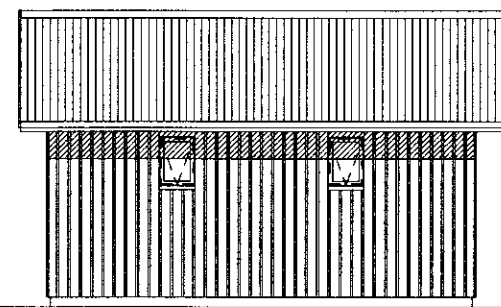
SAMPYKKT
 0.6 JAN. 2010
Helgi Hafliðason
 Byggingarfræði, uppsetning, mæling og flökt.



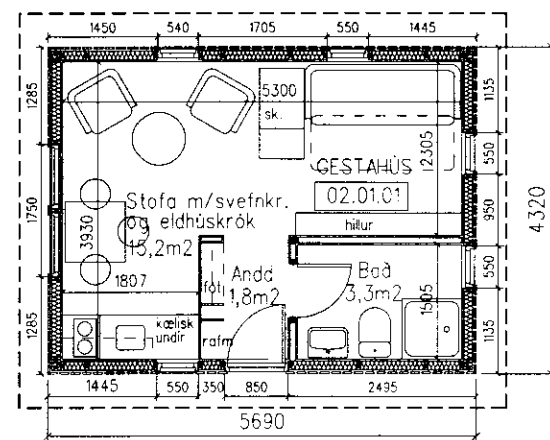
Þverskurður



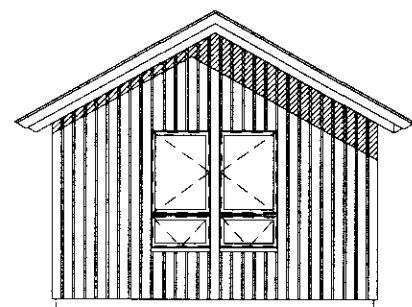
Norðurgafi



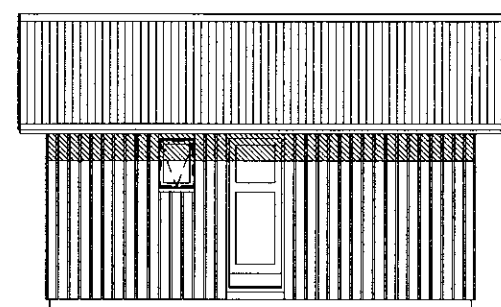
Vesturhlíð



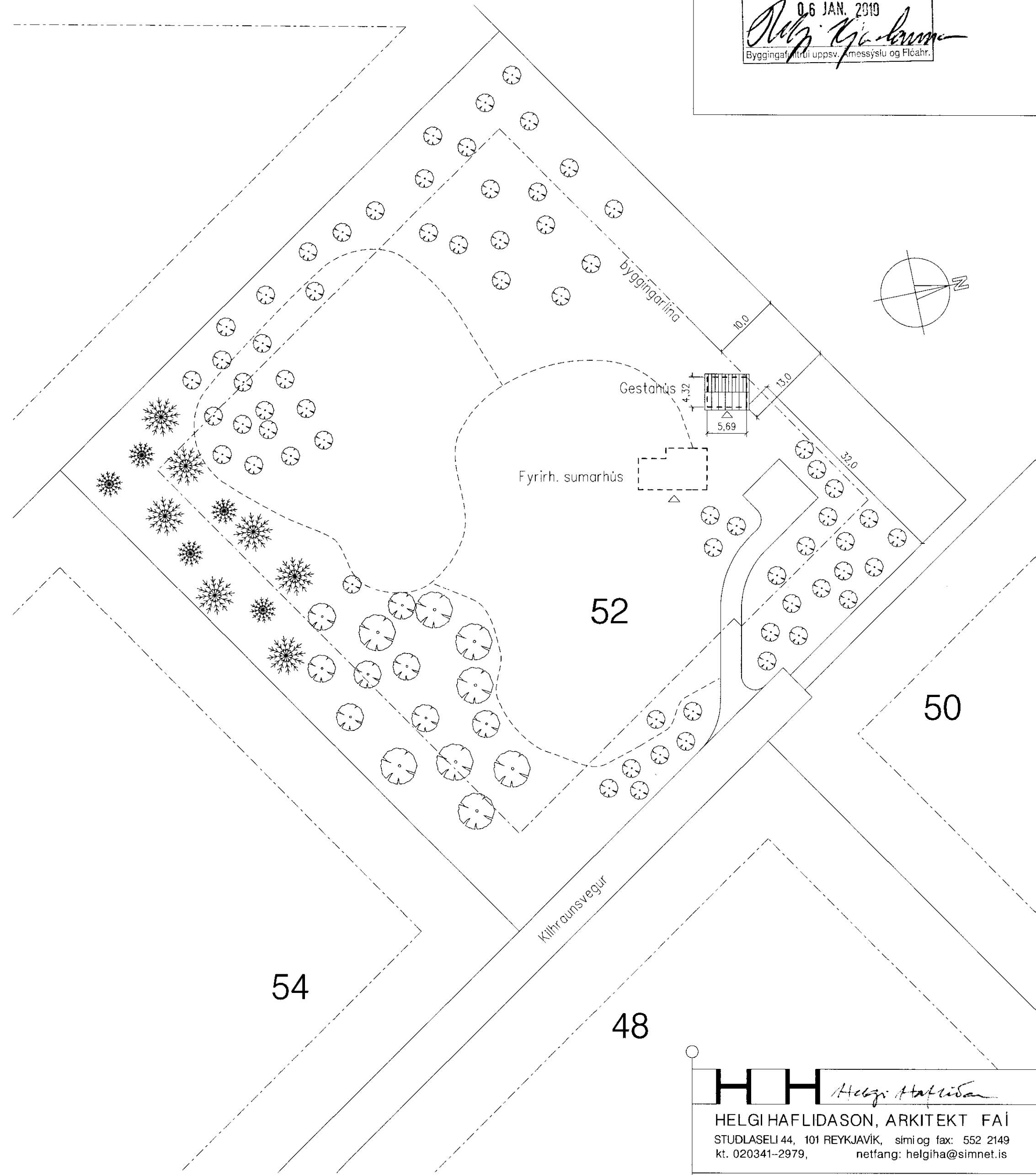
Grunnmynd, 1:100



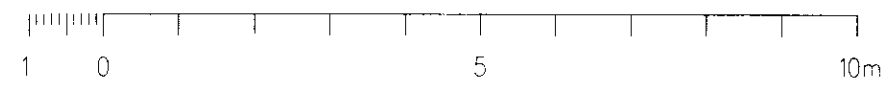
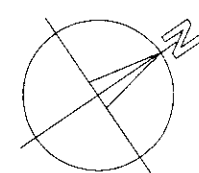
Suðurgafi



Austurhlíð



Afstöðumynd 1:500



HH *Helgi Hafliðason*

HELGI HAFLIÐASON, ARKITEKT FAÍ
 STUDLASELI 44, 101 REYKJAVÍK, sími og fax: 552 2149
 kt. 020341-2979, netfang: helgiha@simnet.is

VERK	VERÐI
Kilhraunsvegur 52 -- gestahús	0952
Skeiða- og Gnúpverjahreppi	

HEITI	TEKNI NR
Grunnmynd, skurður, útlit	0.01
Afstöðumynd	

KVAFI	DAGI
1:100, 1:500	10. nóv. '09