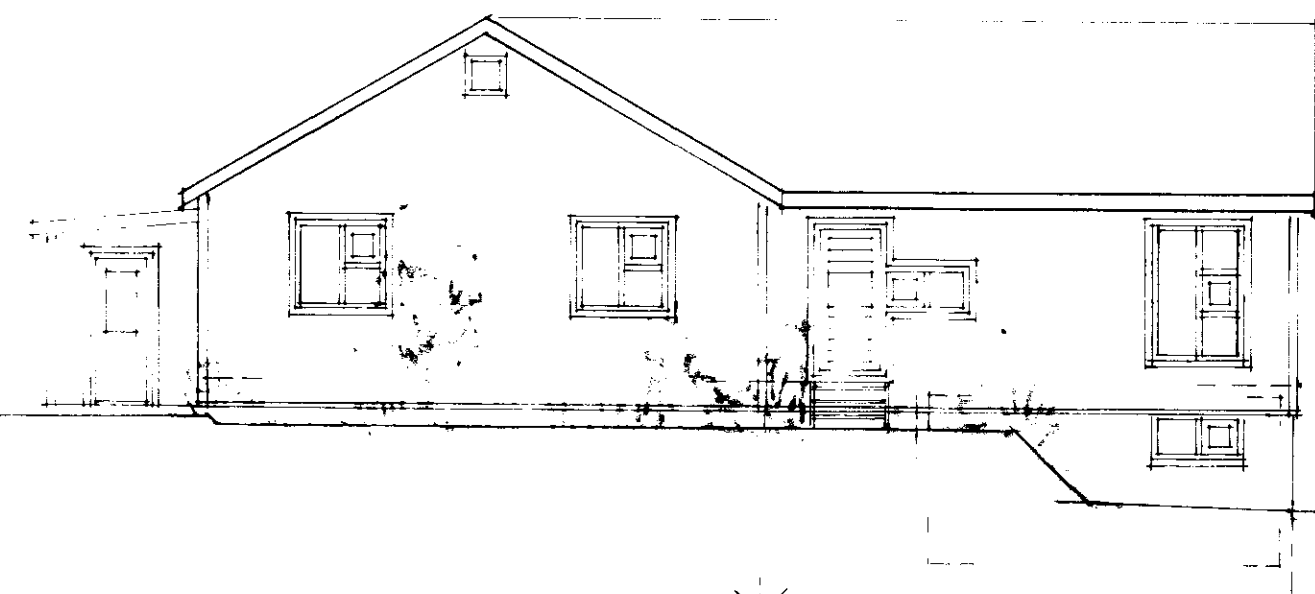
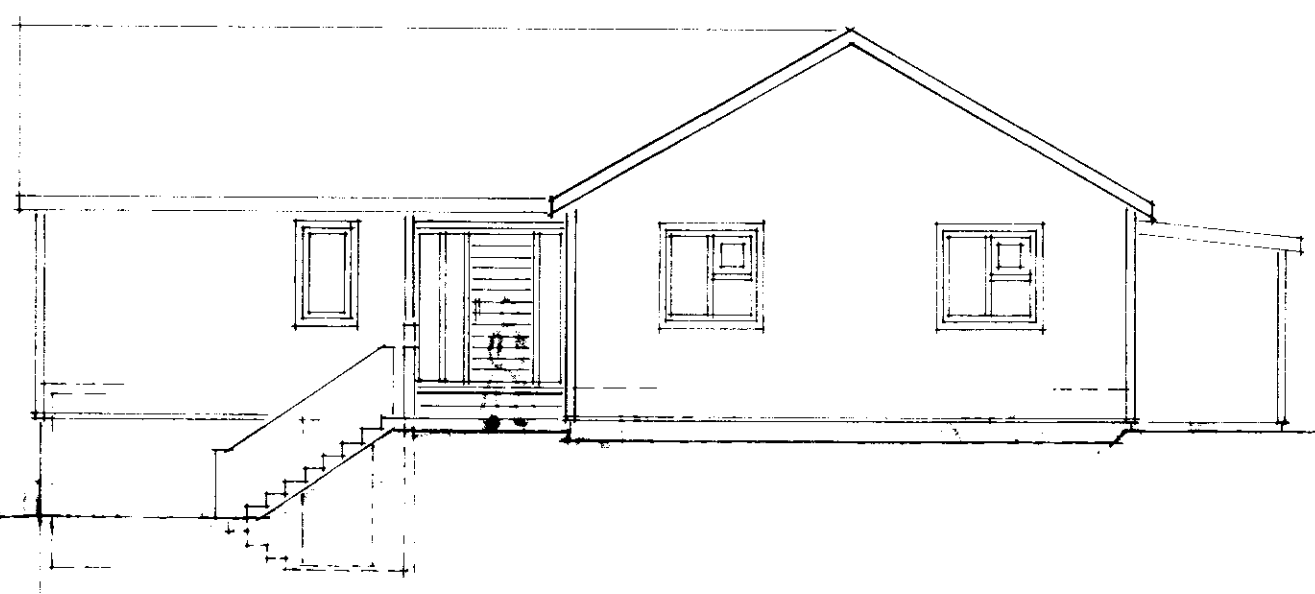


27.07.81



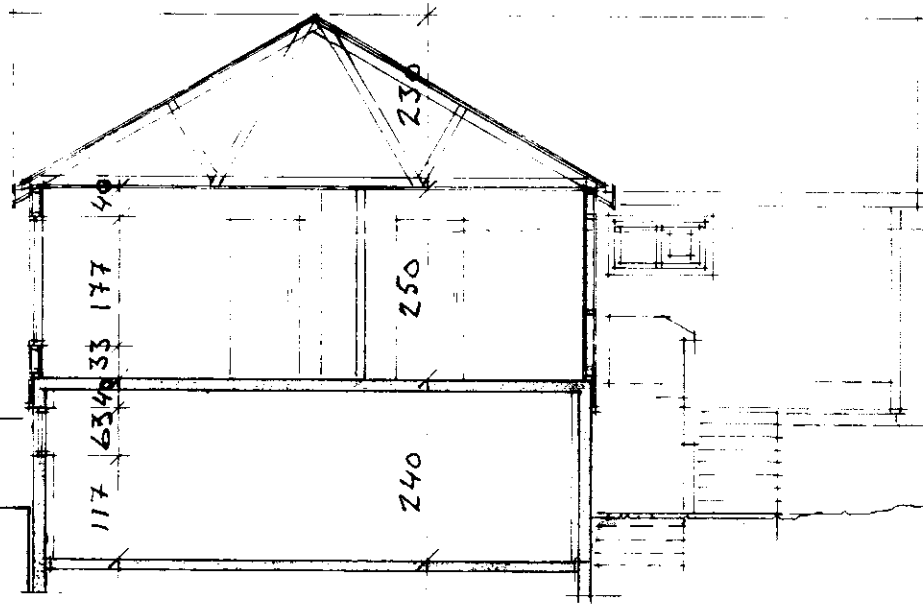
vestur

NÚV. HÚS \times VIBBYGGING

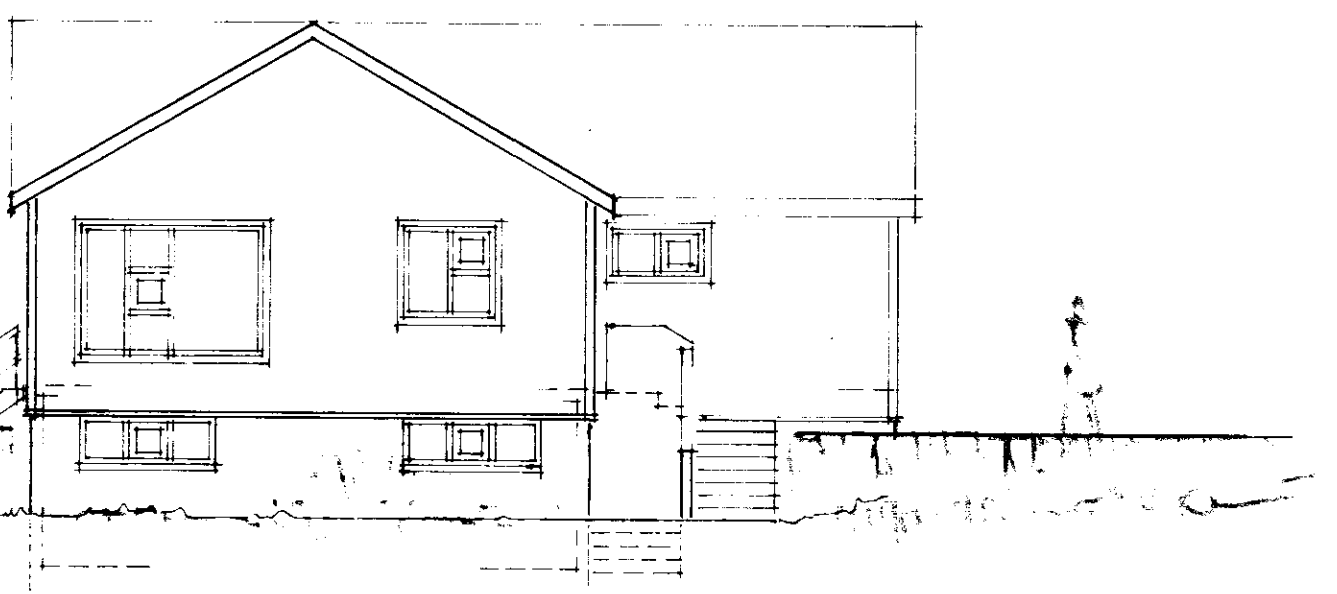


austur

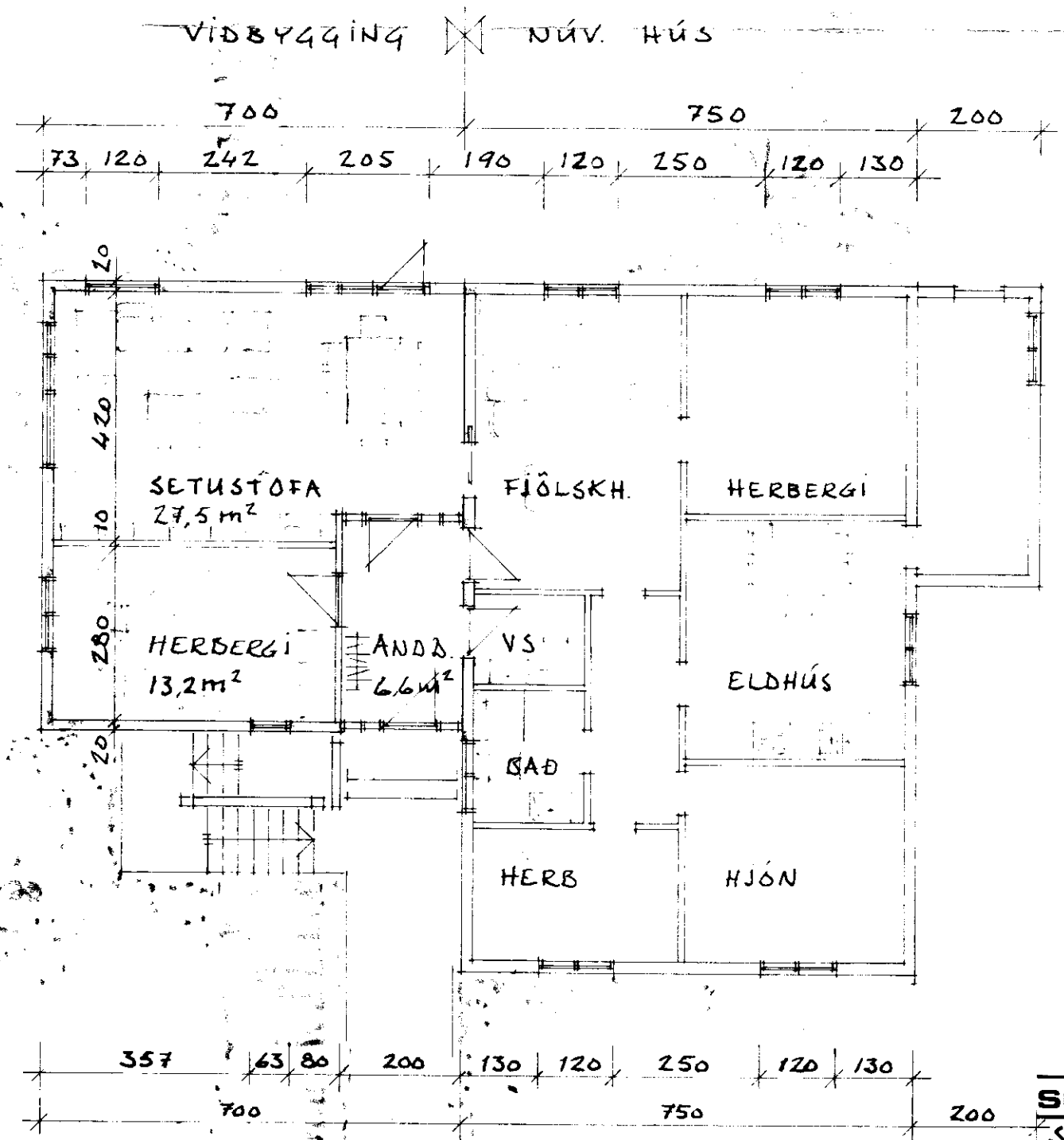
VIBBYGGING \times NÚV. HÚS



skurður



sudur

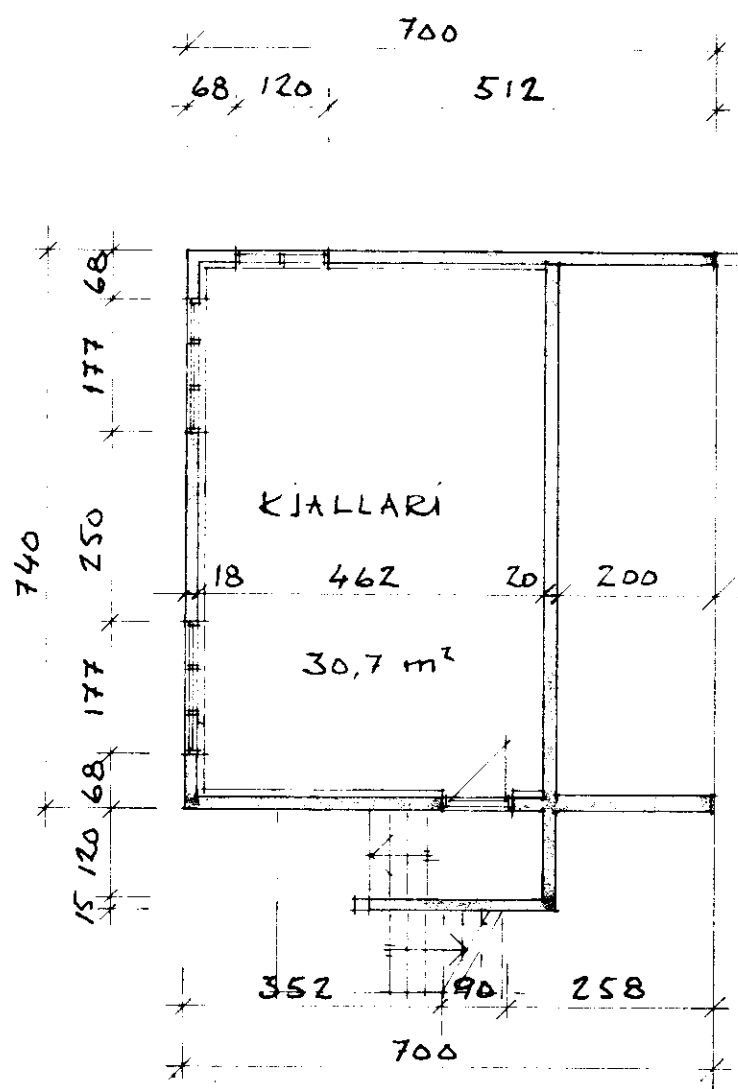


grm. hæðar

VIBBYGGING
FLATARMÁL BRÚTTÓ:

KJALLARI	37.0 m ²
HÆÐ	52.5 m ²
SÁMTALS	89.5 m ²

RÚMMÁL: 291,7 m³



kjallari

SIG. GÍSLASON ARKITEKT FAI
STÓRI NÚPUR III GNÚPVERJAHREPP
VIBBYGGING
GRUNNHYNDIR, ÚTLIT, SCURÐUR MKV. 1:100
STUÐLABERGÍ, 1. JÚNÍ 1981
Sigurður Gíslason Blar. 1 / 1