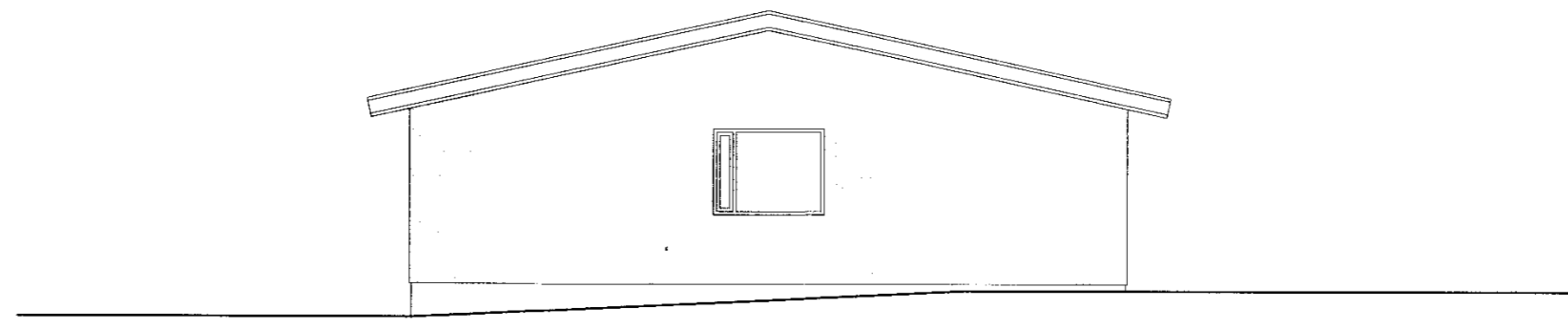
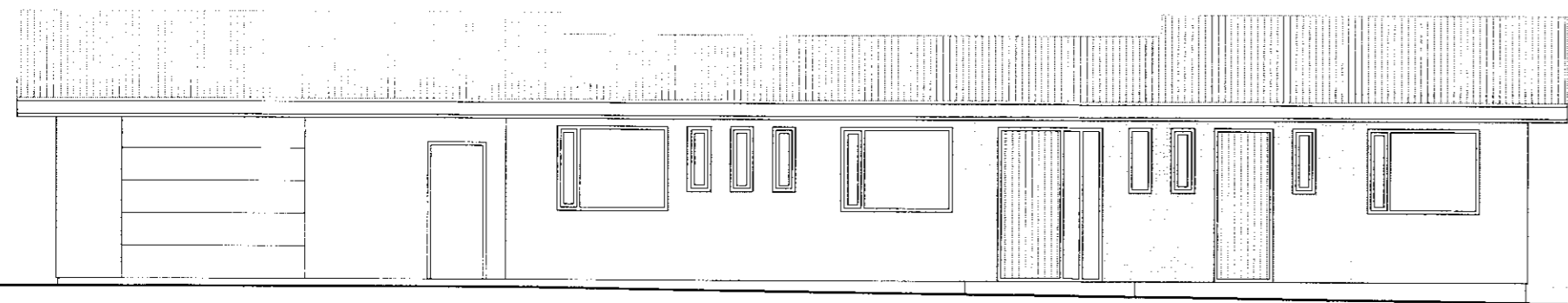


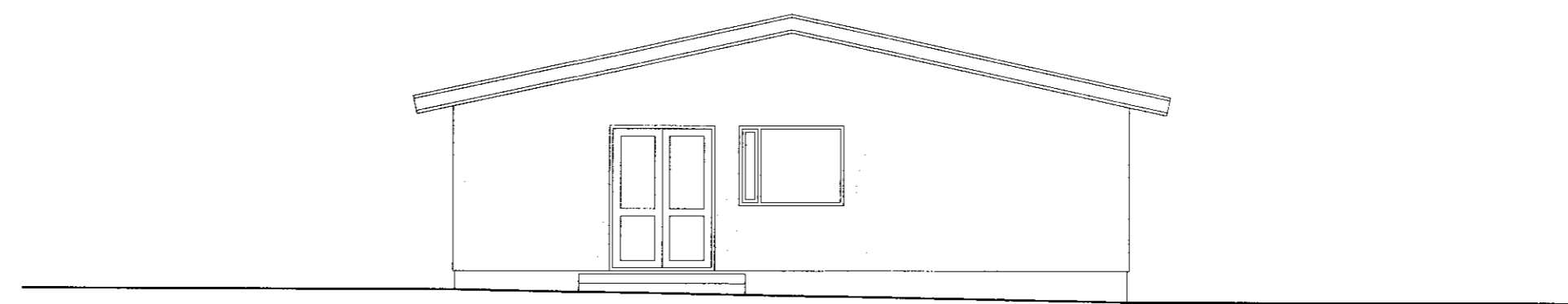
súðausturhlíð



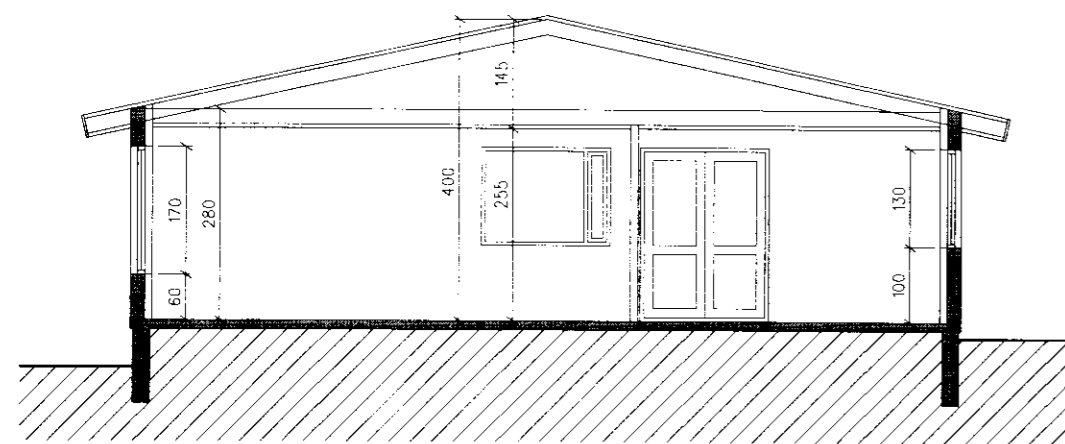
norðausturgaffl



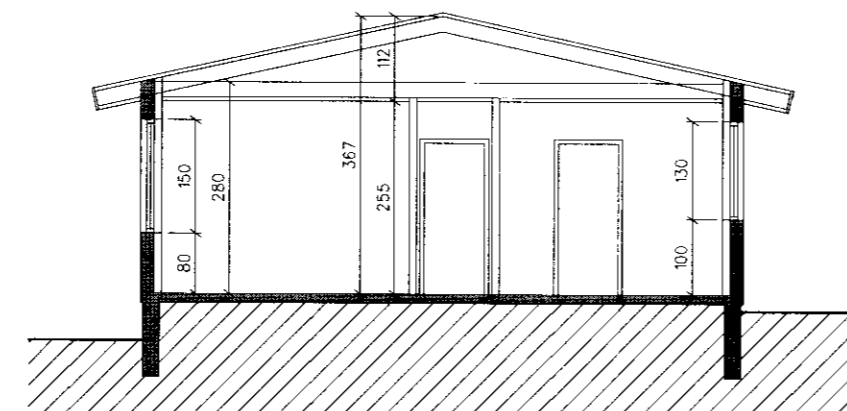
norðvesturhlíð



súðvesturgaffl



sneiðing A-A



sneiðing B-B

SAMPYKKT
28 APR. 2010
Einar Ingimarsson
Byggingafulltrúi uppsv. Áhessyslu og Fíahar.

Einar Ingimarsson
arkitekt
Lýnghélaí 3, 110 Reykjavík
Sími: 587 2772, 884 4478
netfang: lynghe@eimma.is

Hrísholt 6, Bláskógabyggð

Útlit, sneiðingar

daga / umf. 9. apríl 2010, Einar

skala: 1:100

Einar Ingimarsson