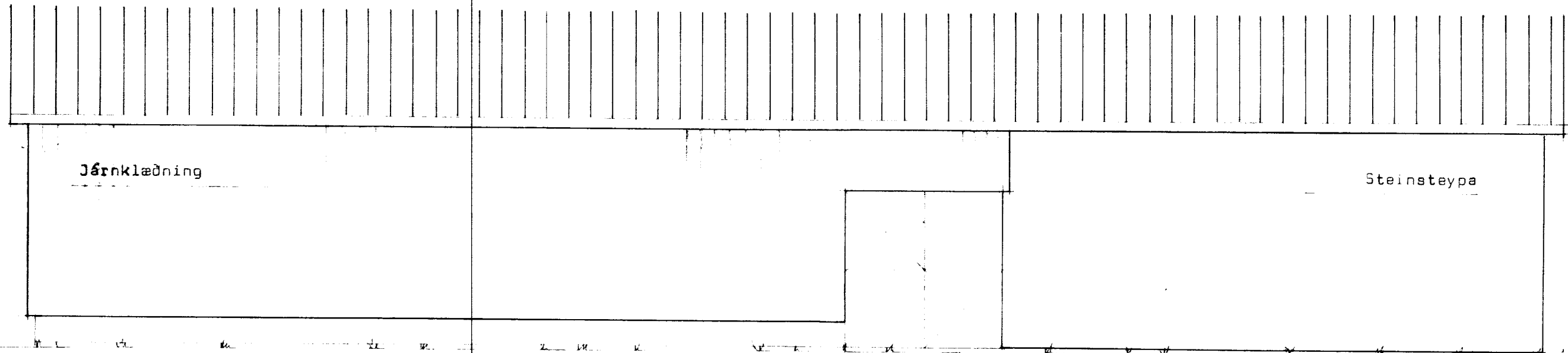
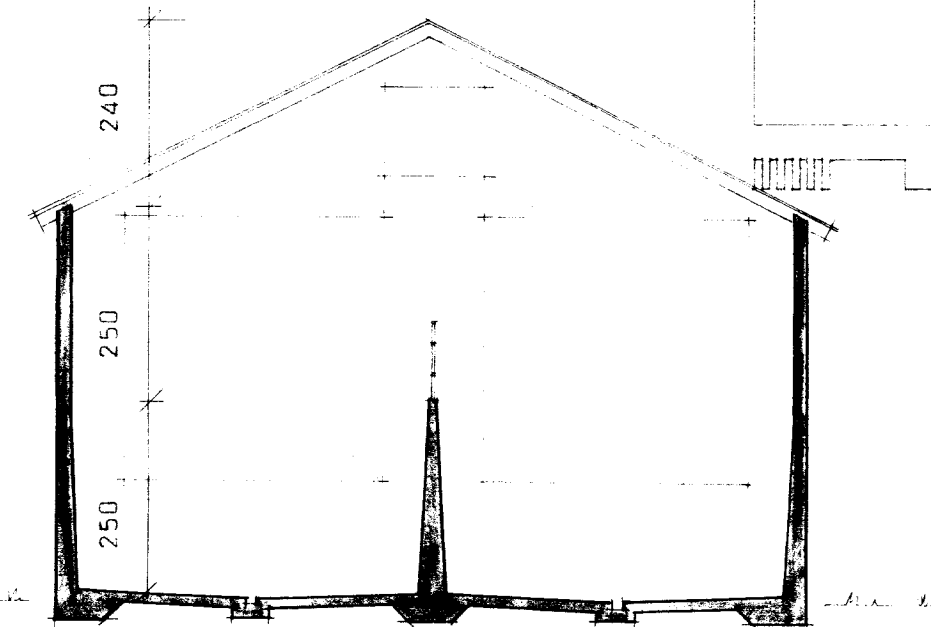


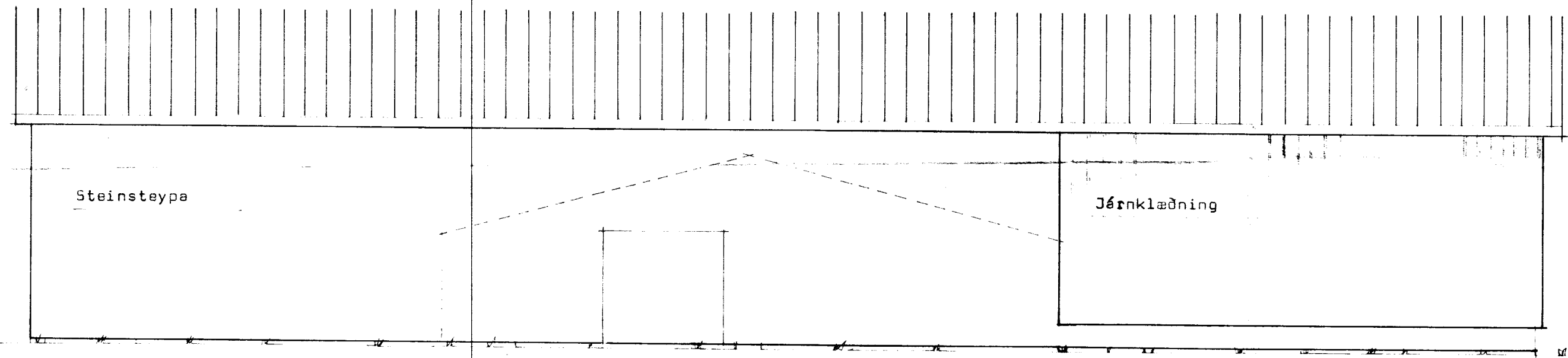
8.09.82



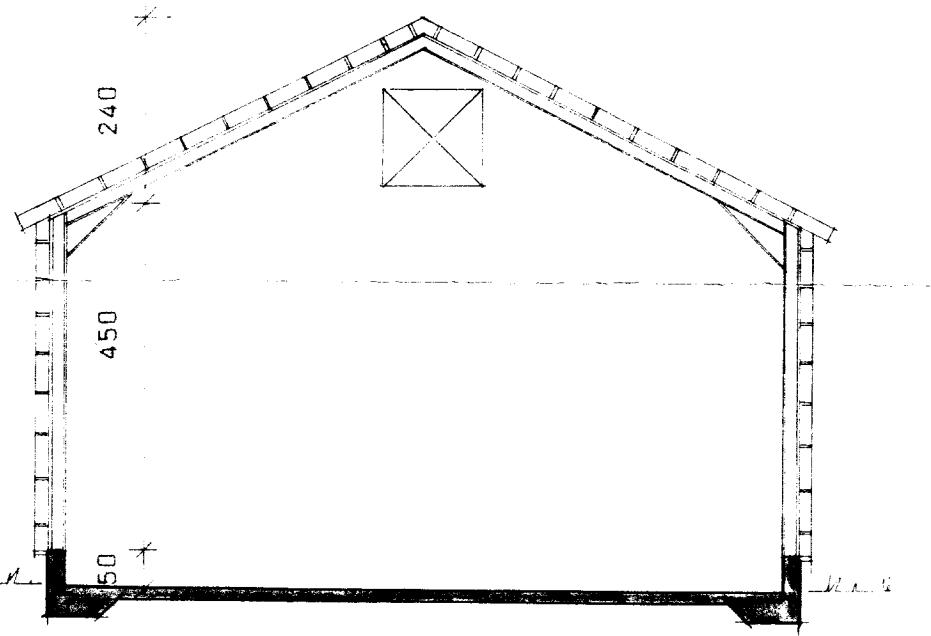
HLIÐARMYND (fré fjósi)



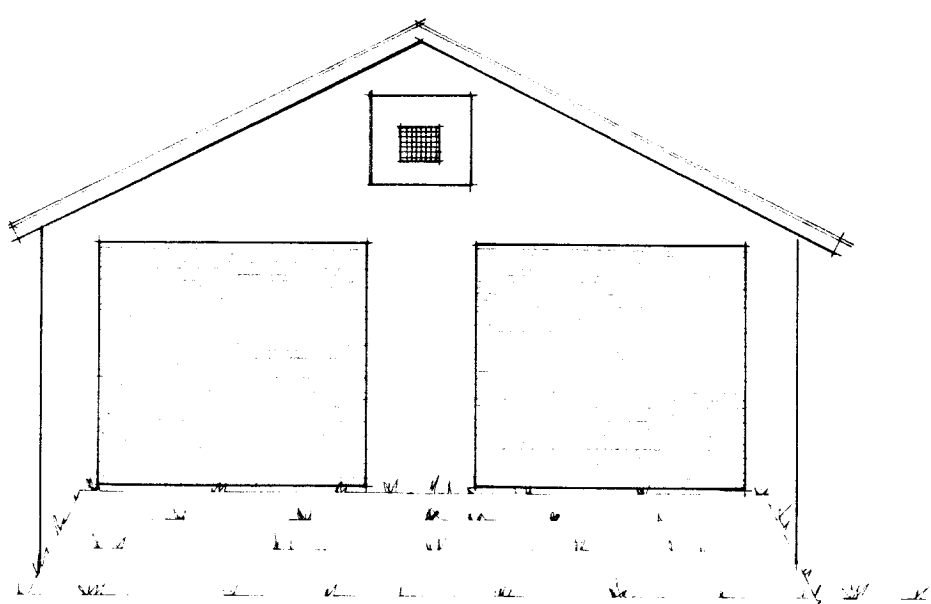
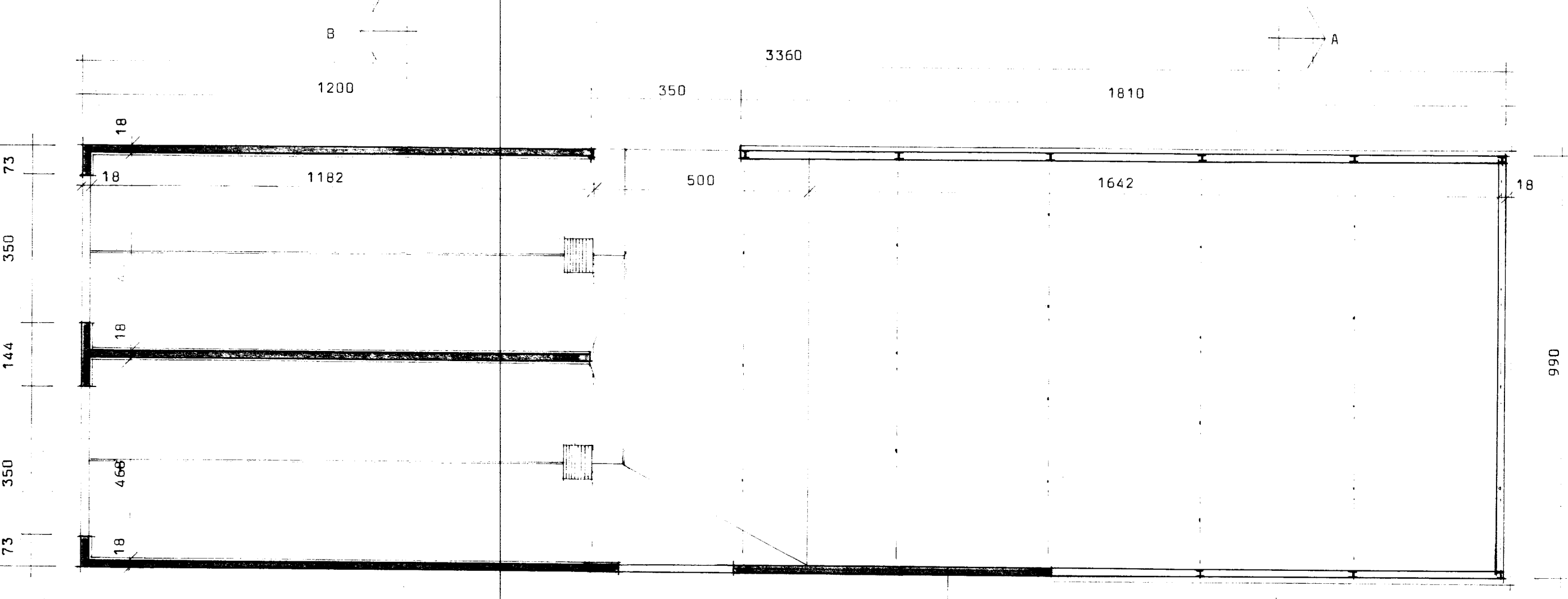
SKURÐUR A-A  
VOTHEY



HLIÐARMYND (að ventanlegu fjósi)



SKURÐUR B-B  
ÞURRHEY.



GAFLRYND (Vothey)

STÆRDIR:  
 Hlúður 332,6<sup>m²</sup>, 2062<sup>m³</sup>  
 Stæbbi votheys 297<sup>m³</sup>  
 Stæbbi þurrh. 821,7<sup>m³</sup>

**BL** BYGGINGASTOFNUN LANDBÚNADARINS  
 LAUGAVEGI 120. REYKJAVÍK. SÍMI 25444  
 ANDRÉSFJÓSS, Skeiðerhreppi, Arn.  
 Hlúður, vothey og þurrhey, steinsteypa  
 og stálgrind.  
 Grunnmynd, útlit og skurðir.

TEIKN. NR. 30-4415  
 BREYTT FRÁ  
 MÆLIKVARDI 1:100  
 DAGSETNING 26.8.82  
 TEIKNAD Þórunn

Steyptur bruðaveggur milli fjósa  
 og hlúða